



# KEPS • ROYAL FRIESIAN



KONINKLIJK FRIESCH PAARDEN-STAMBOEK



# Program

- Order of inspection
- Racial type / Breed character
- Conformation / Frame
- Legwork
- Movement
- Grades, premiums and prices
- Linear scoring / index



# Order of inspection

- Condition - health – character
- Racial type / breed expression
- Conformation / frame
- Legwork (conformation and quality)
- Movement (60%)
  - Walk
  - Trot



# Racial Type



# Racial Type

- Head
- Head-neck-connection
- Neck: - direction
  - length
  - shape
- Hair
- Colour
- Proud look



# Head

- Small, expressive, noble
- Big, bright eyes, set far apart
- Nasal bone dished
- Jaws light, providing room for throat
- Small ears, tips towards each other



# Noble head



**Small ears, tips towards each other**





# Roman nose



# Small eyes – Crude head



**Long head, small eye, jaws with low pr**  
**Roman nose**



# Poll

- Long

# Head-neck-connection

- Light (not big glands)
- Room for throat between jaws



# Neck

- Long
- Upstanding (almost vertical)
- Crest slightly arched
- Well muscled in upper part
- High from the chest



**Nice, vertical, well  
shaped neck**



**Horizontal neck**



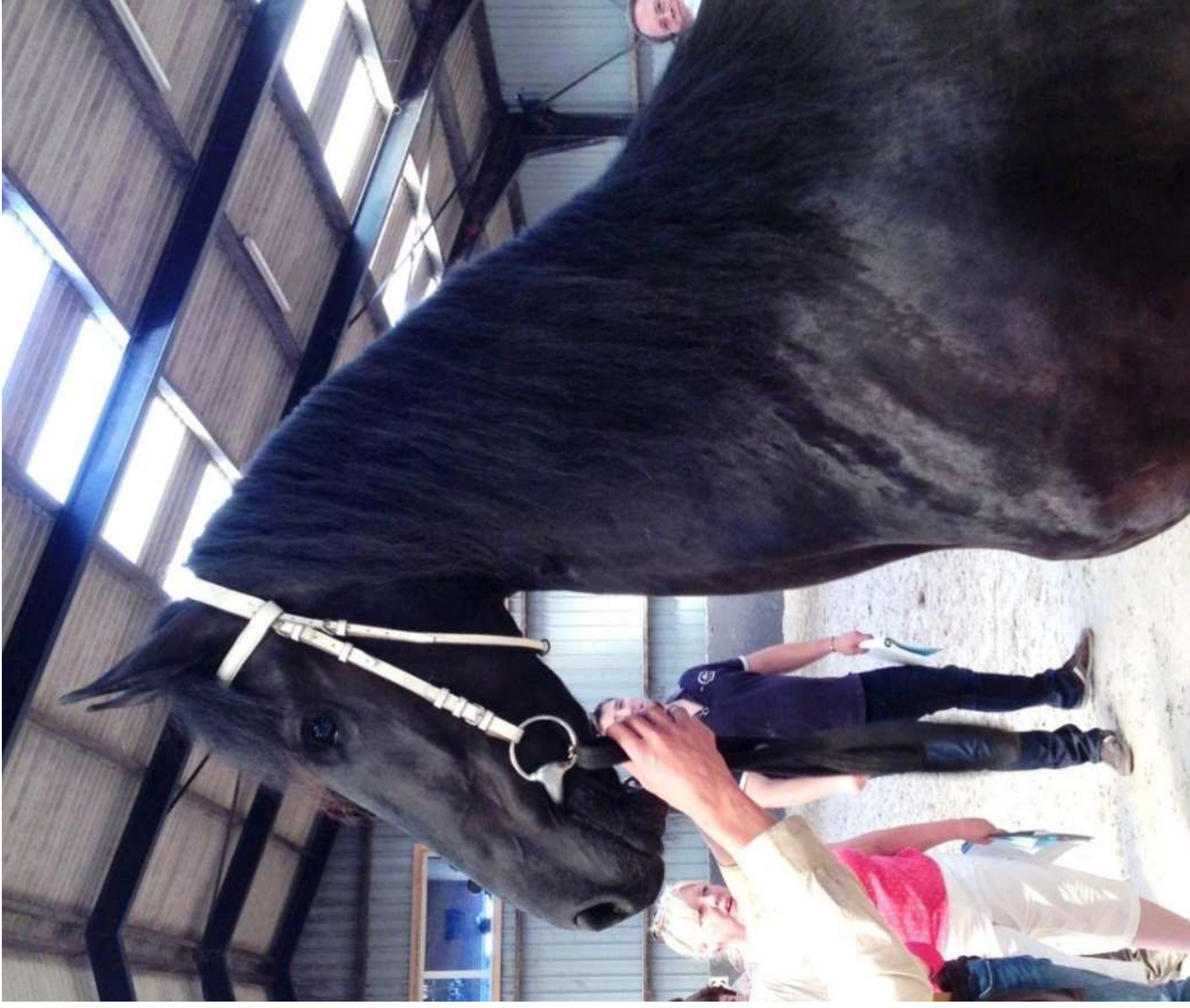
**Heavy, short neck**  
**Bulging neck**



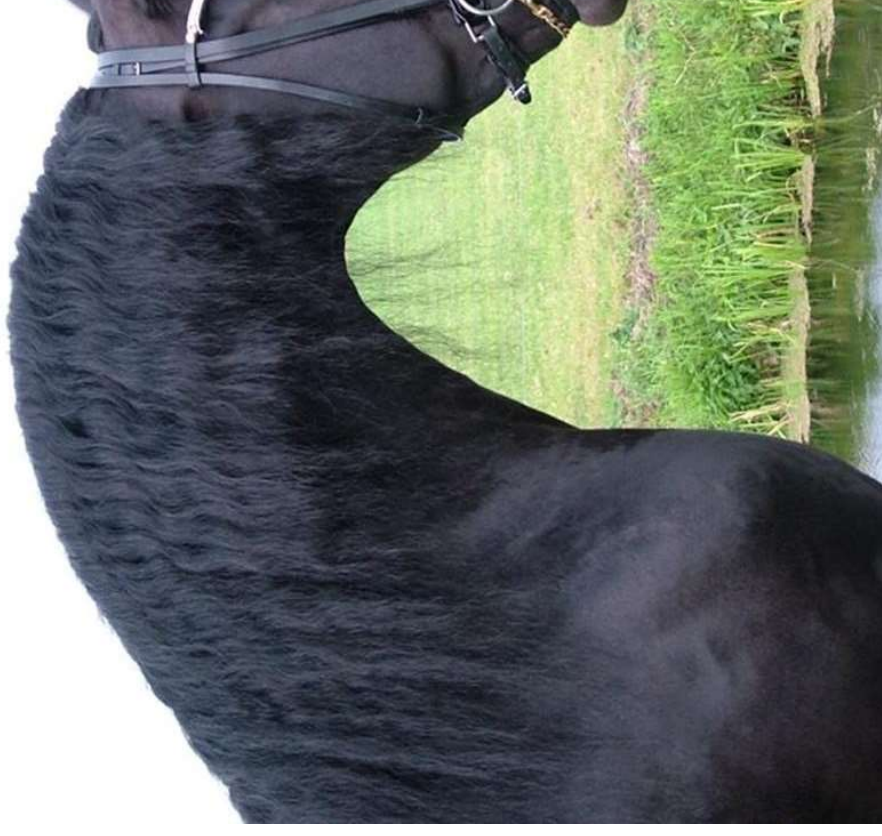
**Short neck**



**Ewe neck**



**Swan neck**





# Unstable crest: C-line



# Unstable crest: S-line



# Fallen crest



# Hair

- Mane
- Tail
- Feathers (socks)

→ **thick and long**



# Colour

**Jet black**



**Not: faded black**



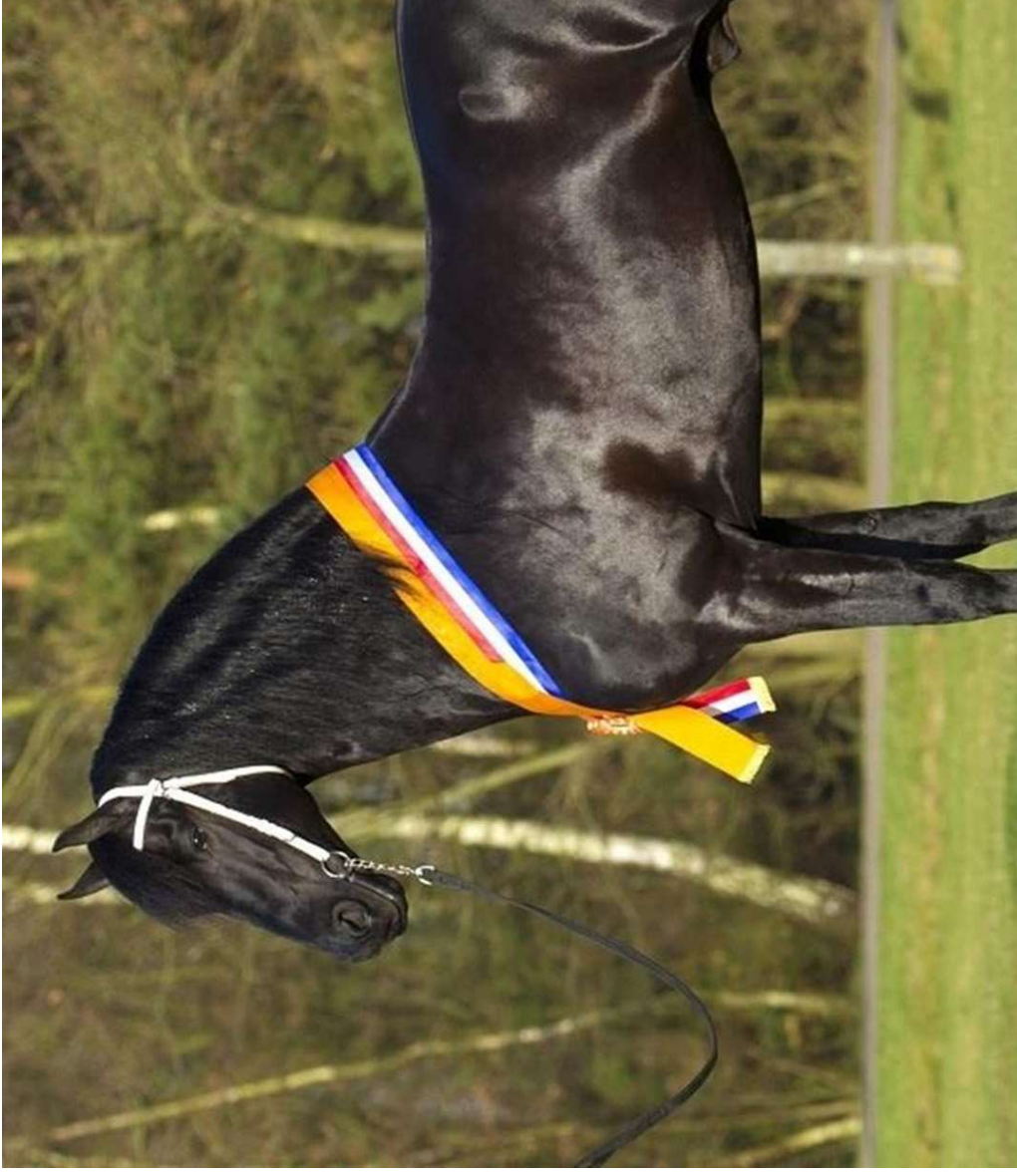
# Markings

## Allowed:


- Markings max. 3 cm above the line between eyes
- White at the sole of the hoofs
- White on the reproductive parts (not for m
- White markings caused by injury (statementer veterinarian needed)



# Conformation



# Conformation

- Overall appearance
  - Direction of the body
  - Length foreleg
  - Shoulder
  - Withers
  - Back
  - Loins
  - Croup
  - Gluteals
- Top line**
- 





# Overall appearance

- Proportional:  
forehand: midsection: hindquarters = 1:1:1
- Rectangular
- Long lines
- High legs
- Light body
- Youthful appearance

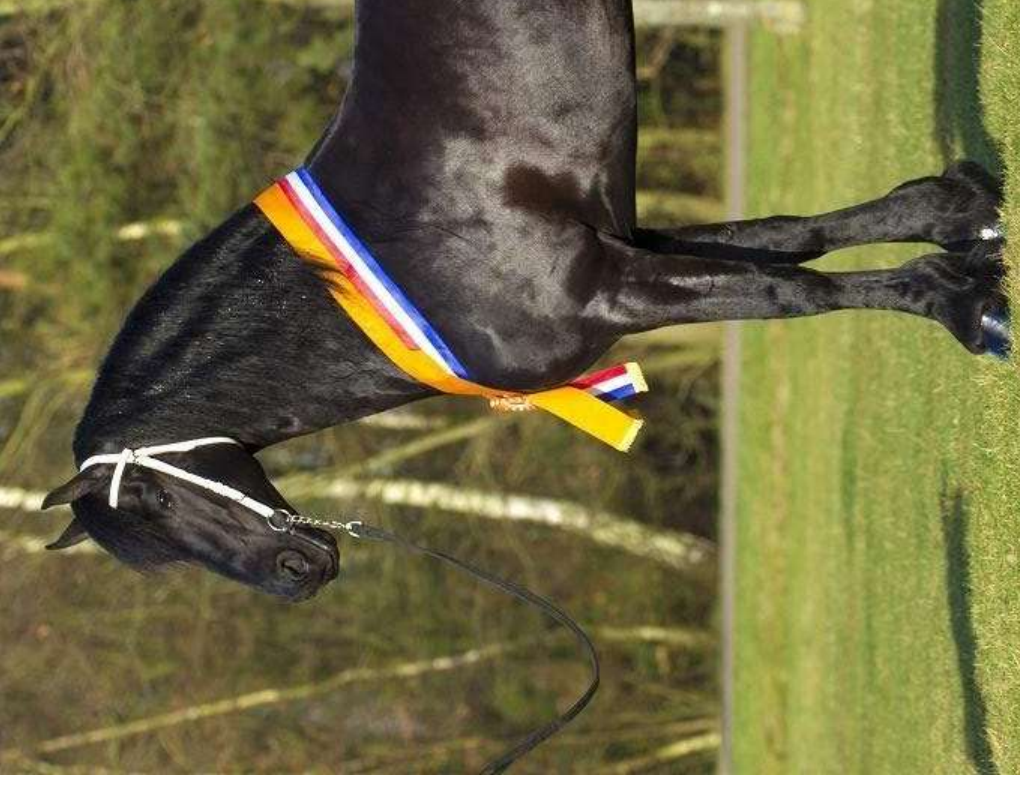
# Proportional 1:1:1



**Square**



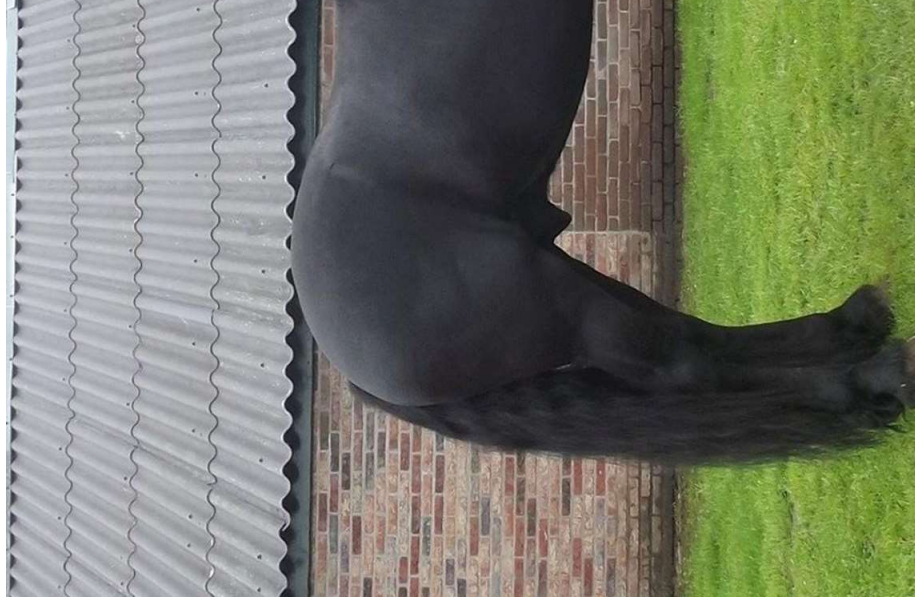
**Rectangular**



**Modern, long lines  
high legs, light body**

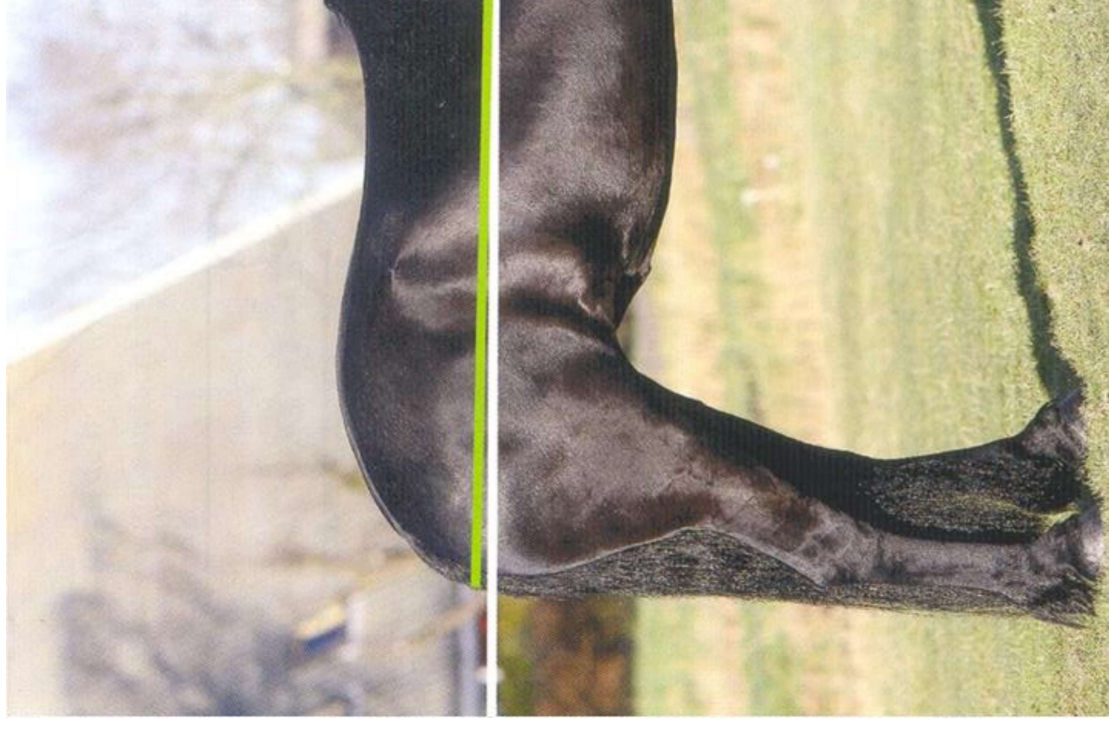


**Classic, h  
short legs**

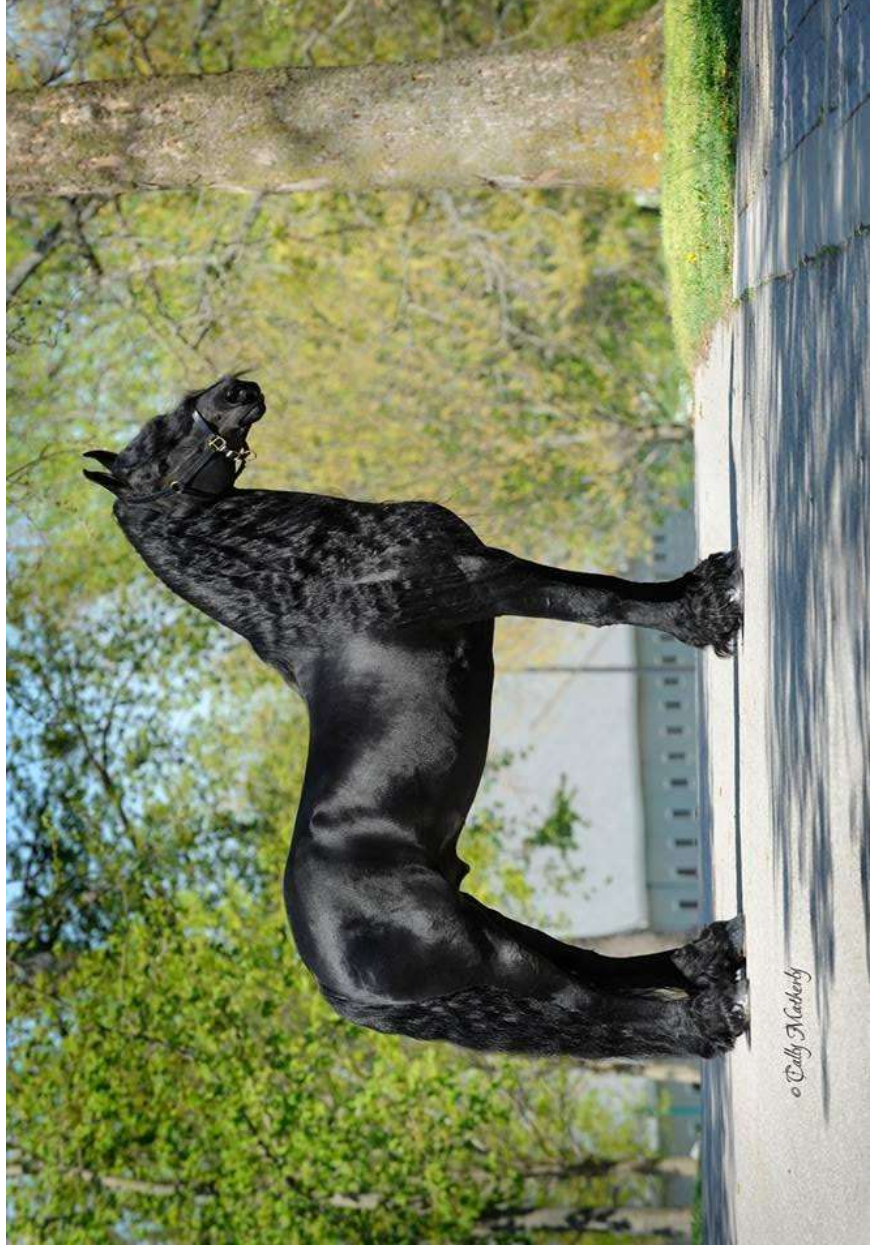
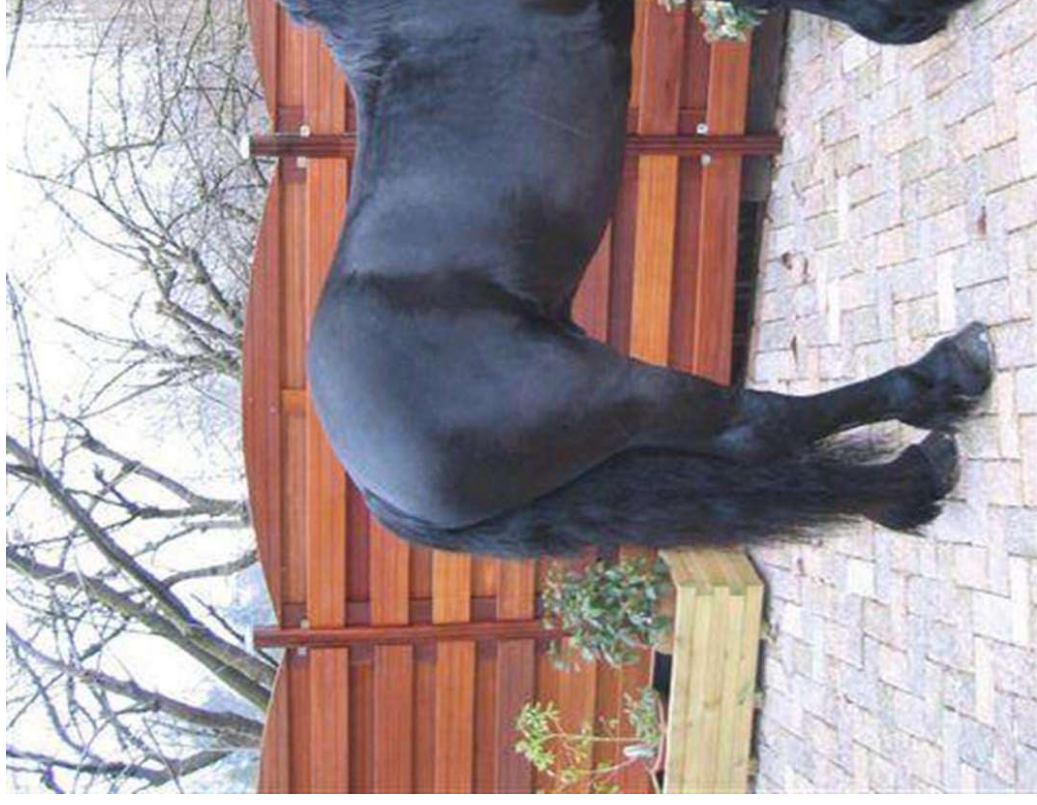


# Direction of the body

- **Horizontal (or almost)**



# Downwards



**Goal: upwards in movement**



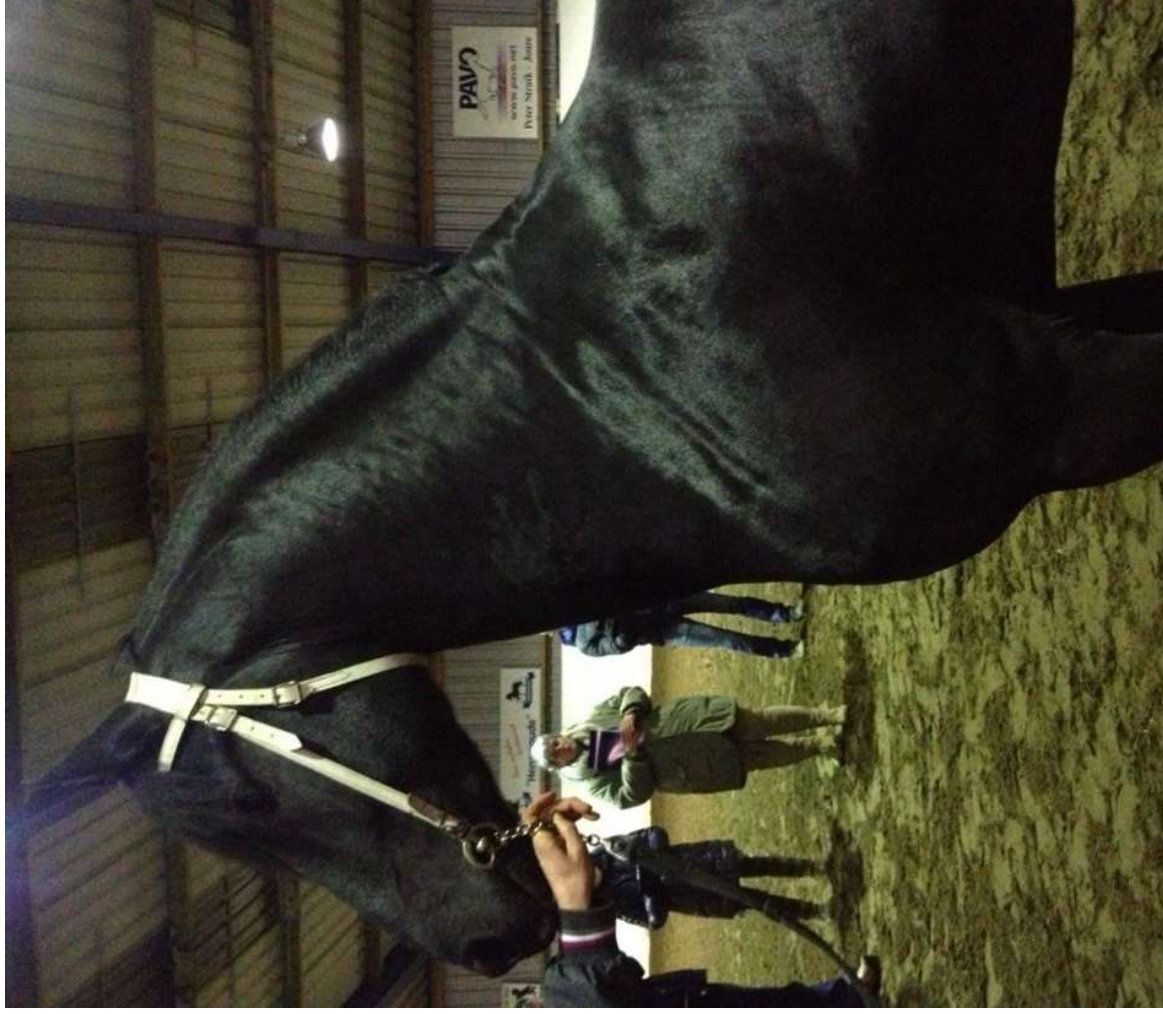
# Shoulder

- Long
- Sloping ( $45^{\circ}$ - $50^{\circ}$  with horizontal line)
- Angle in shoulder joint minimal  $90^{\circ}$





# Sloping

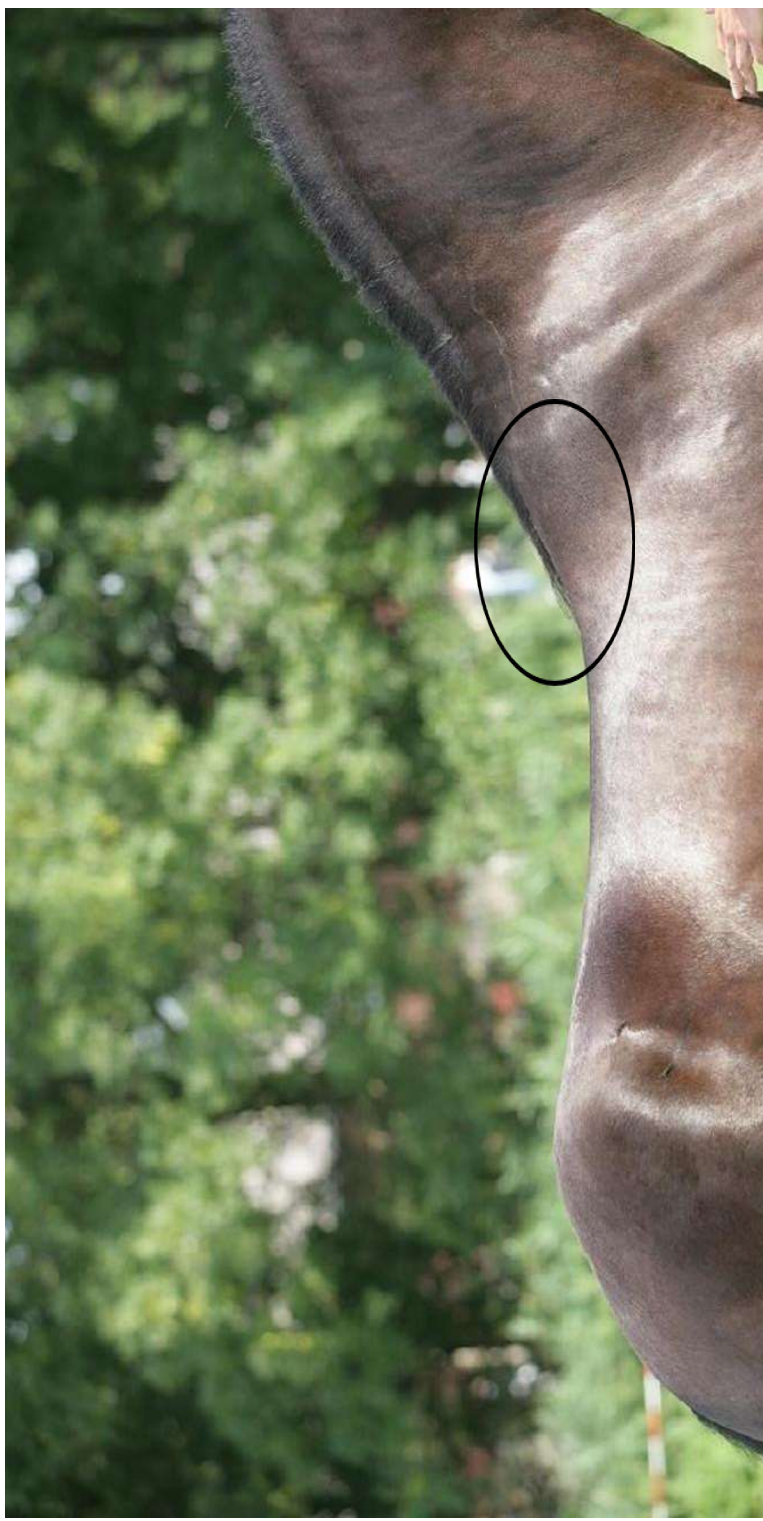


# Steep



# Withers

- Well developed / high
- Long
- Flowing transition to neck and back



**Short**

**Not flowing t**



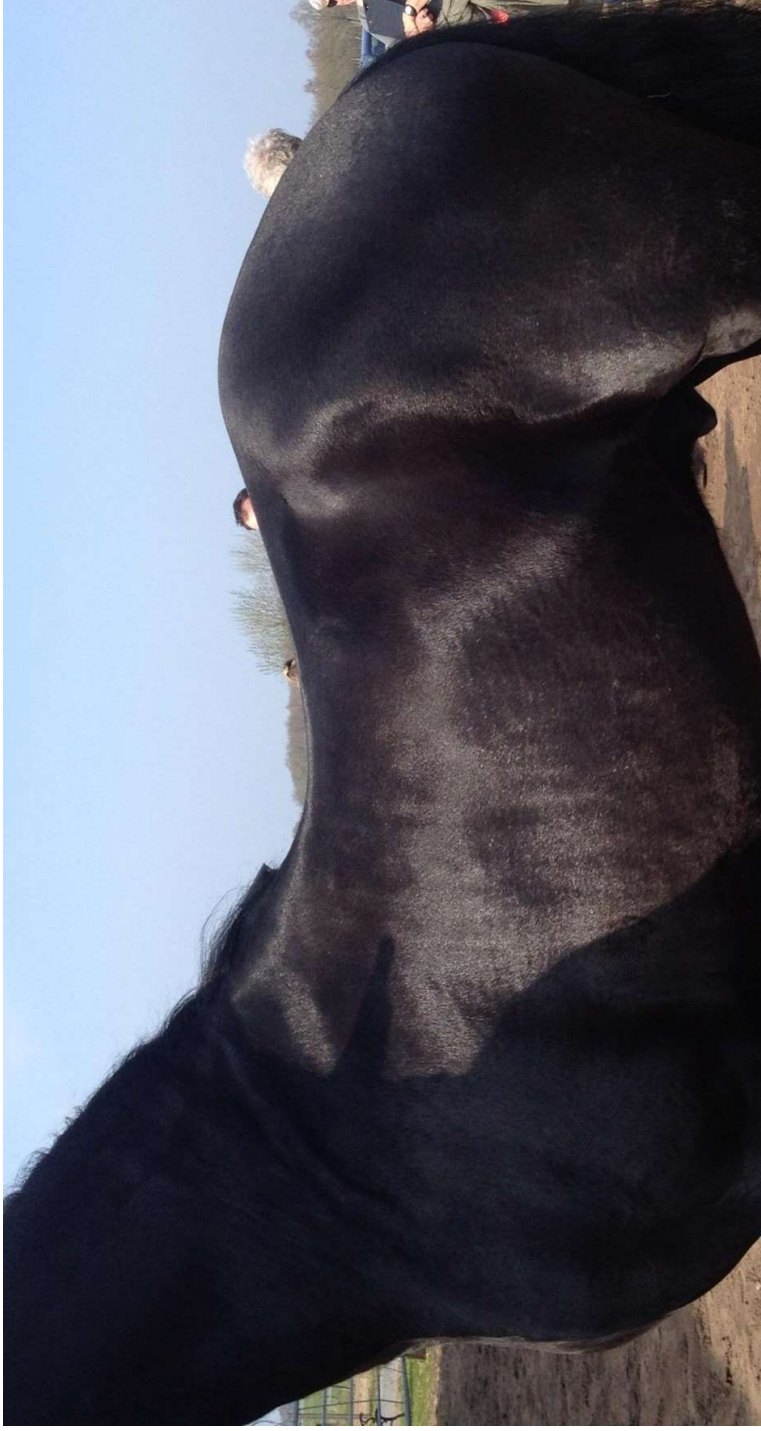
# Back

- Strong
- Well muscled
- Length in proportion (1:1:1) with forehead and h
- Flowing connection to the withers and loins



**Weak**

**Sunken /**



**Tight / Roach-back**

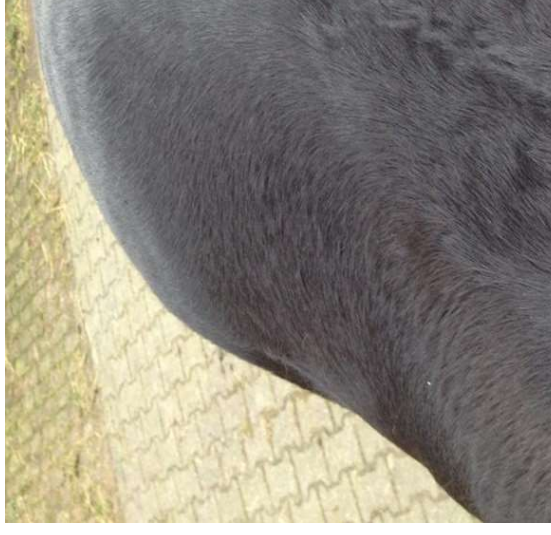


**Hump-**



# Loins

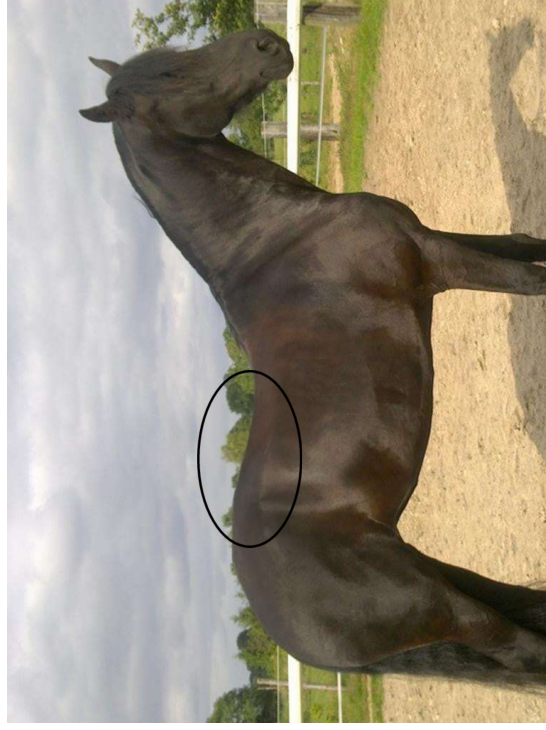
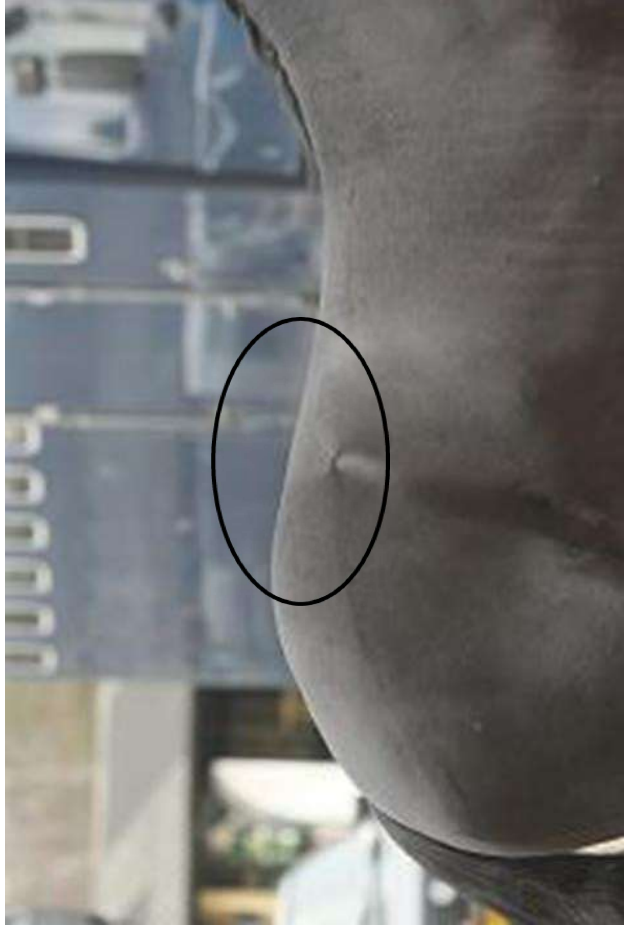
- Strong
- Wide
- Well muscled
- Flowing connection to the croupe



**Tight**

**Raised**

**W**





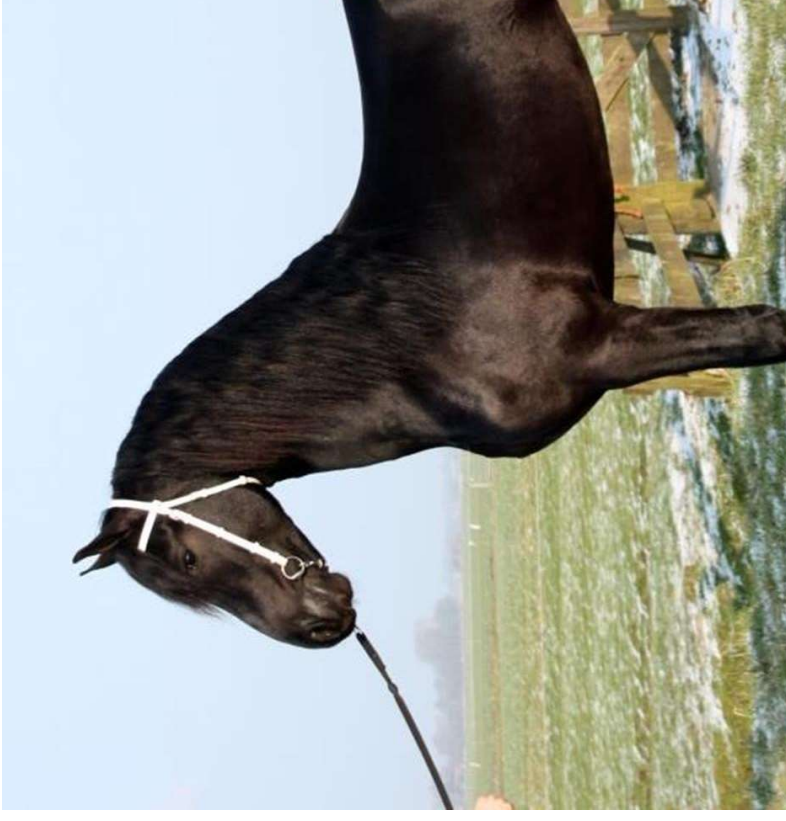
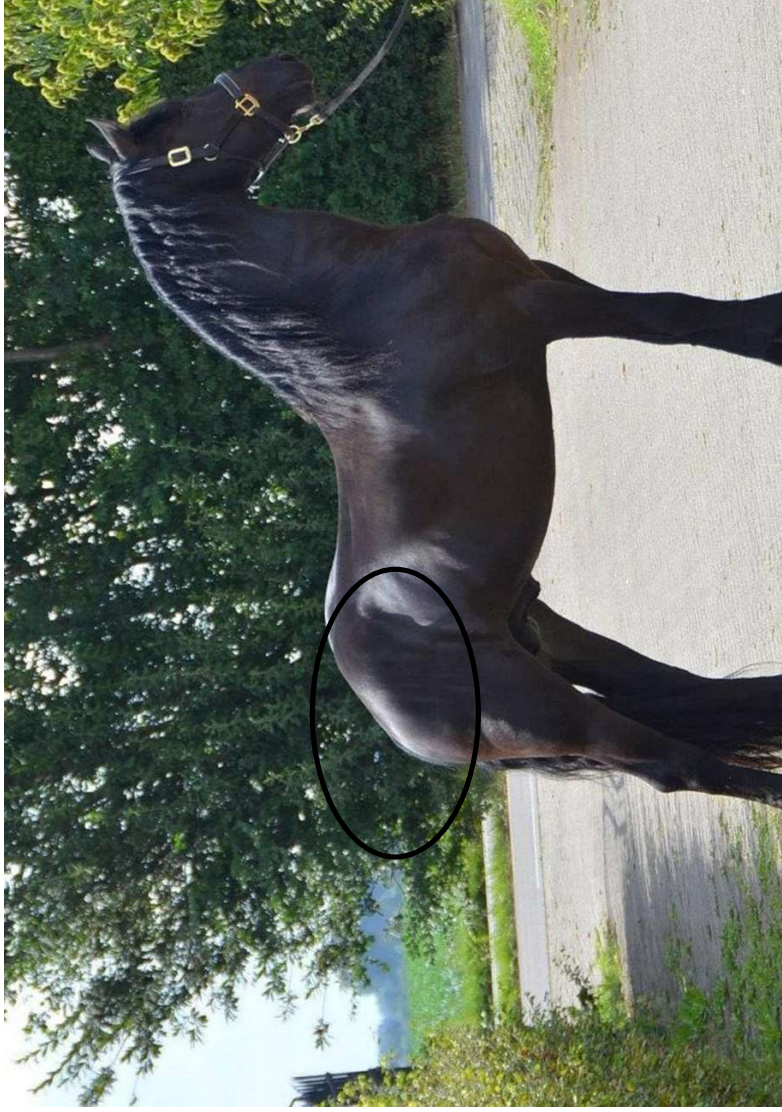
# Croup

- Long (from point of hip to end of seat bone)
- Slightly sloping
- Well muscled



**Too much sloping**

**Straight or k**

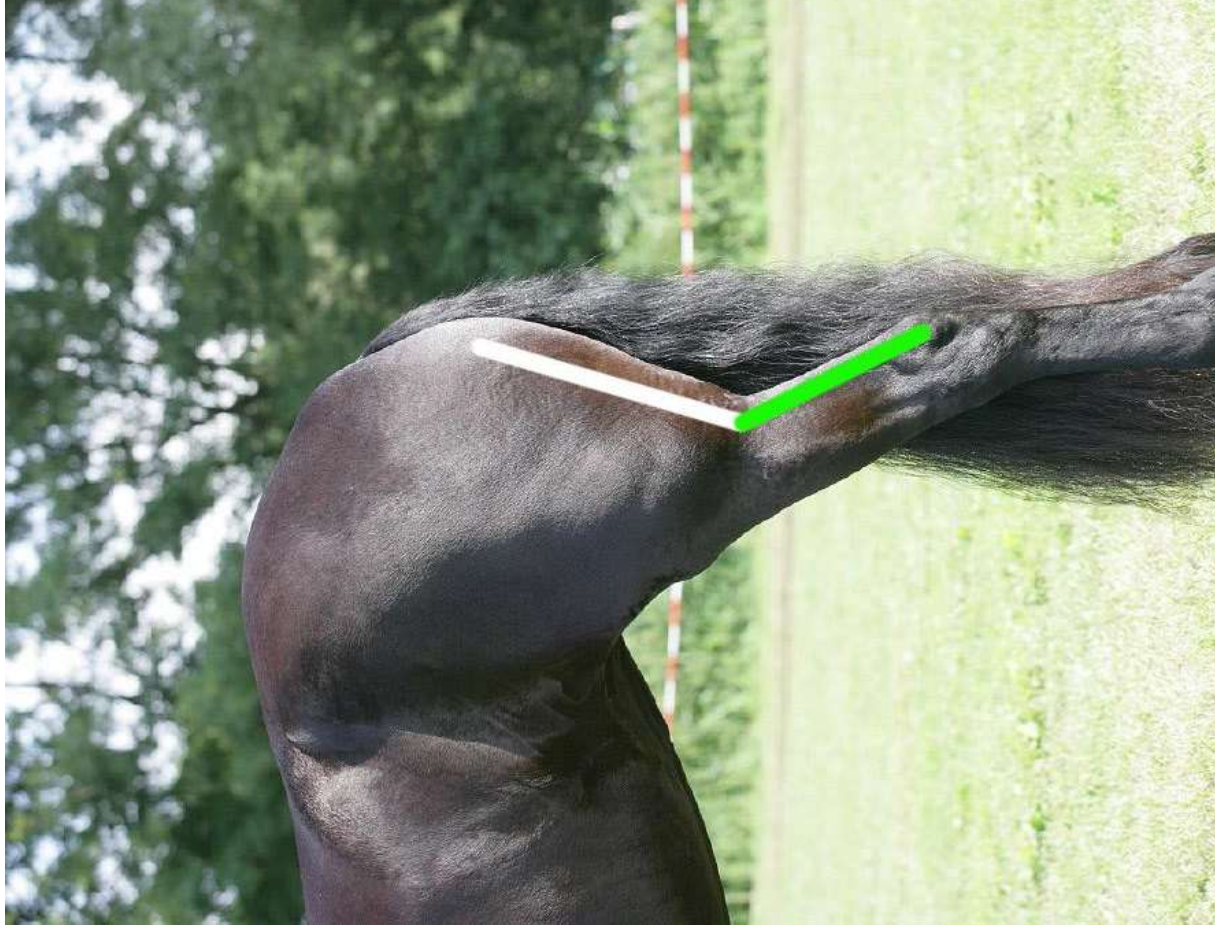


**Nice top line**

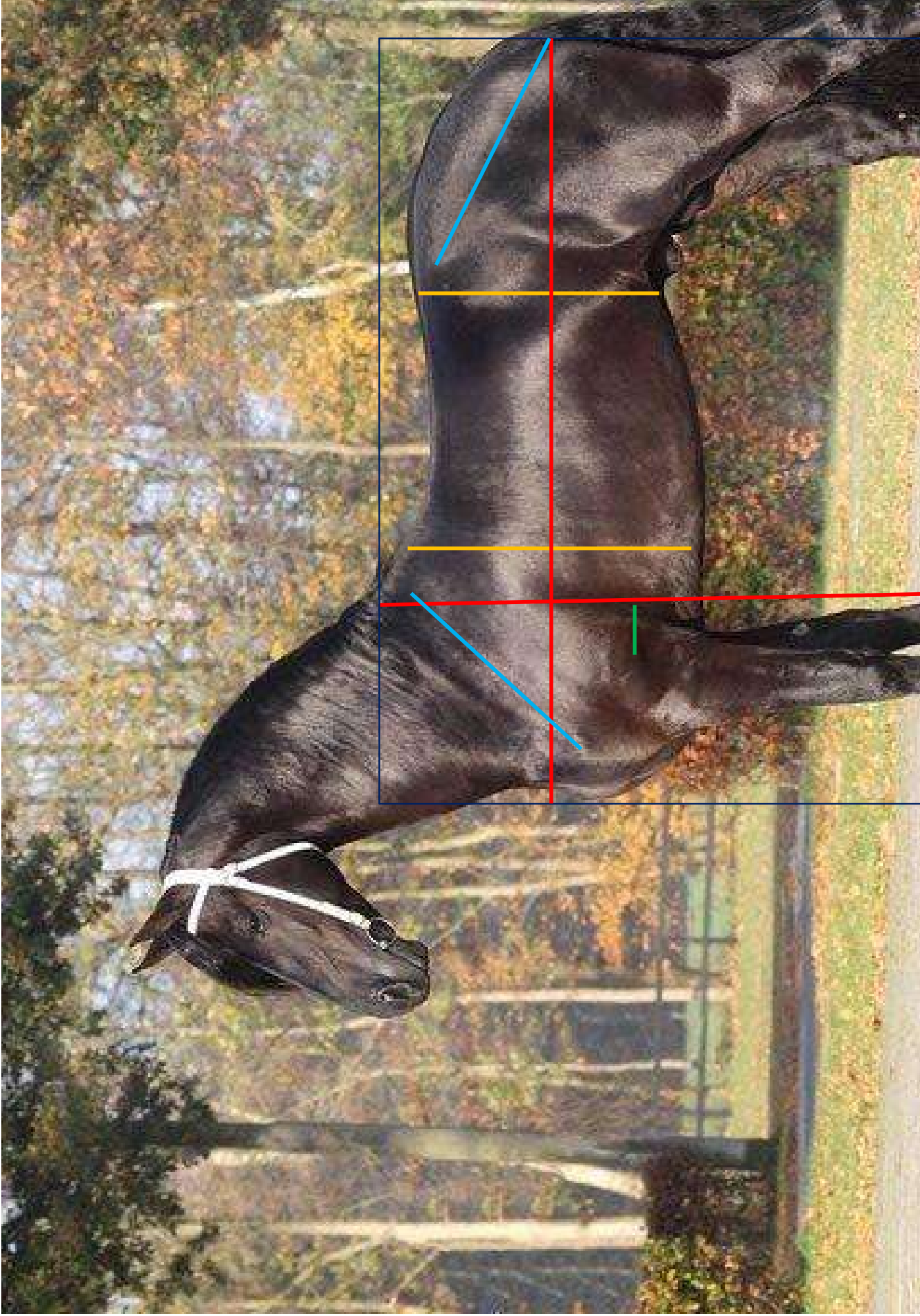


# Gluteals

long and well developed



# In proportion



# Leg conformatio quality



# **Leg conformation and qua**

**Any deviation in leg conformation  
cause an increased risk of wea**

**No feet, no horse!**

# Quality

- Hard
- Clean joint
- Tendons well defined





# **Insufficient quality overfilled hock – bog spavin**



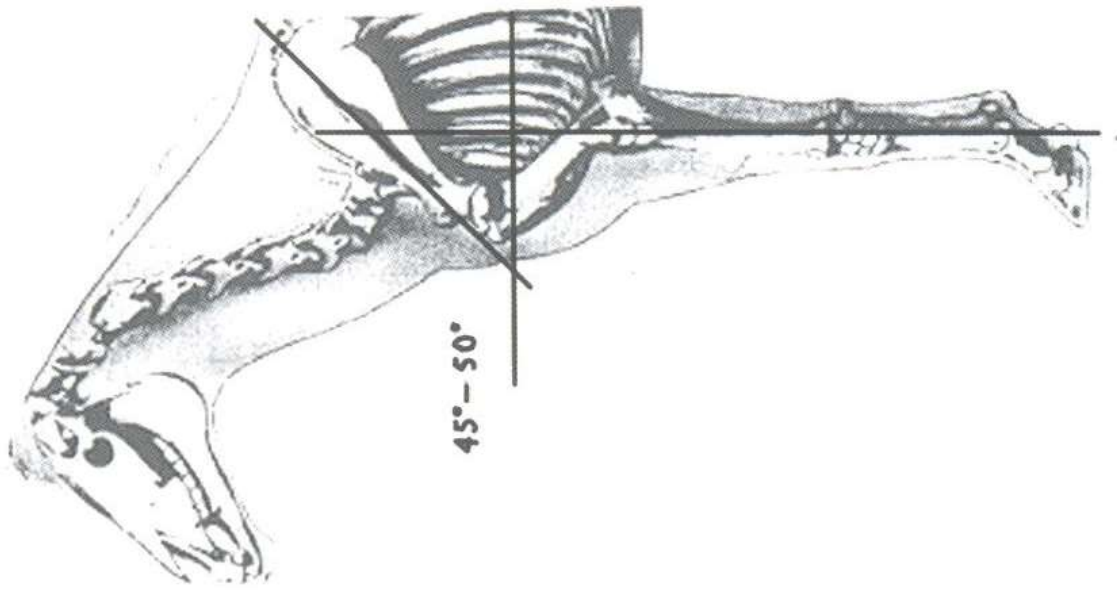
# Foreleg

## Front view



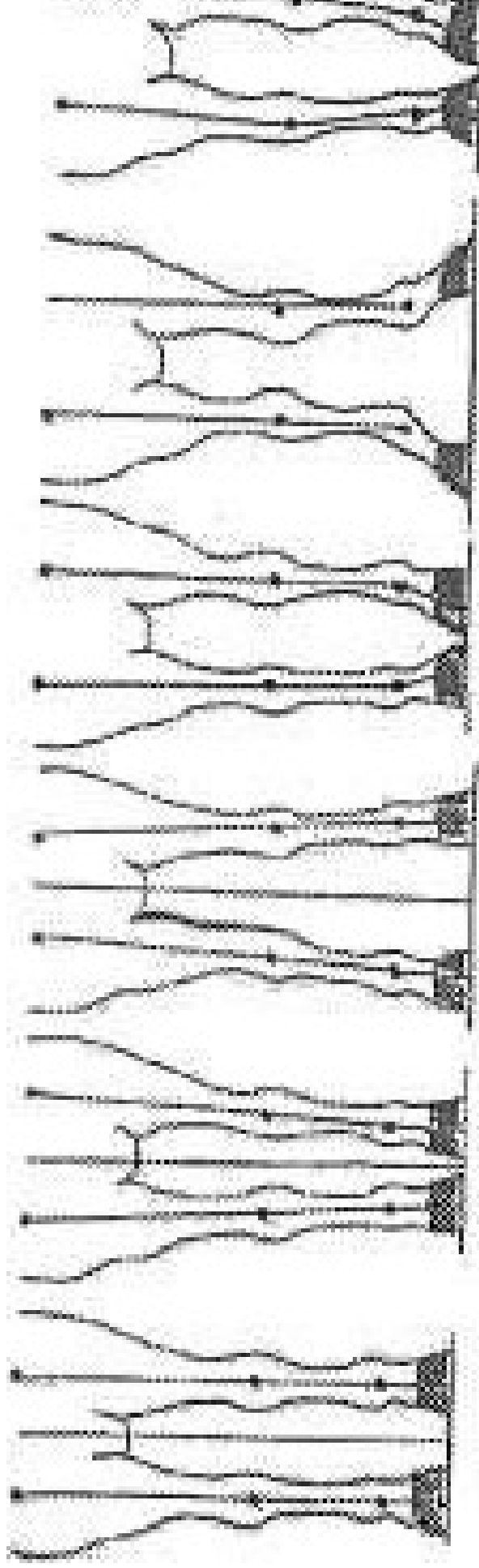
Vierkant staand paard van voren

## Side view



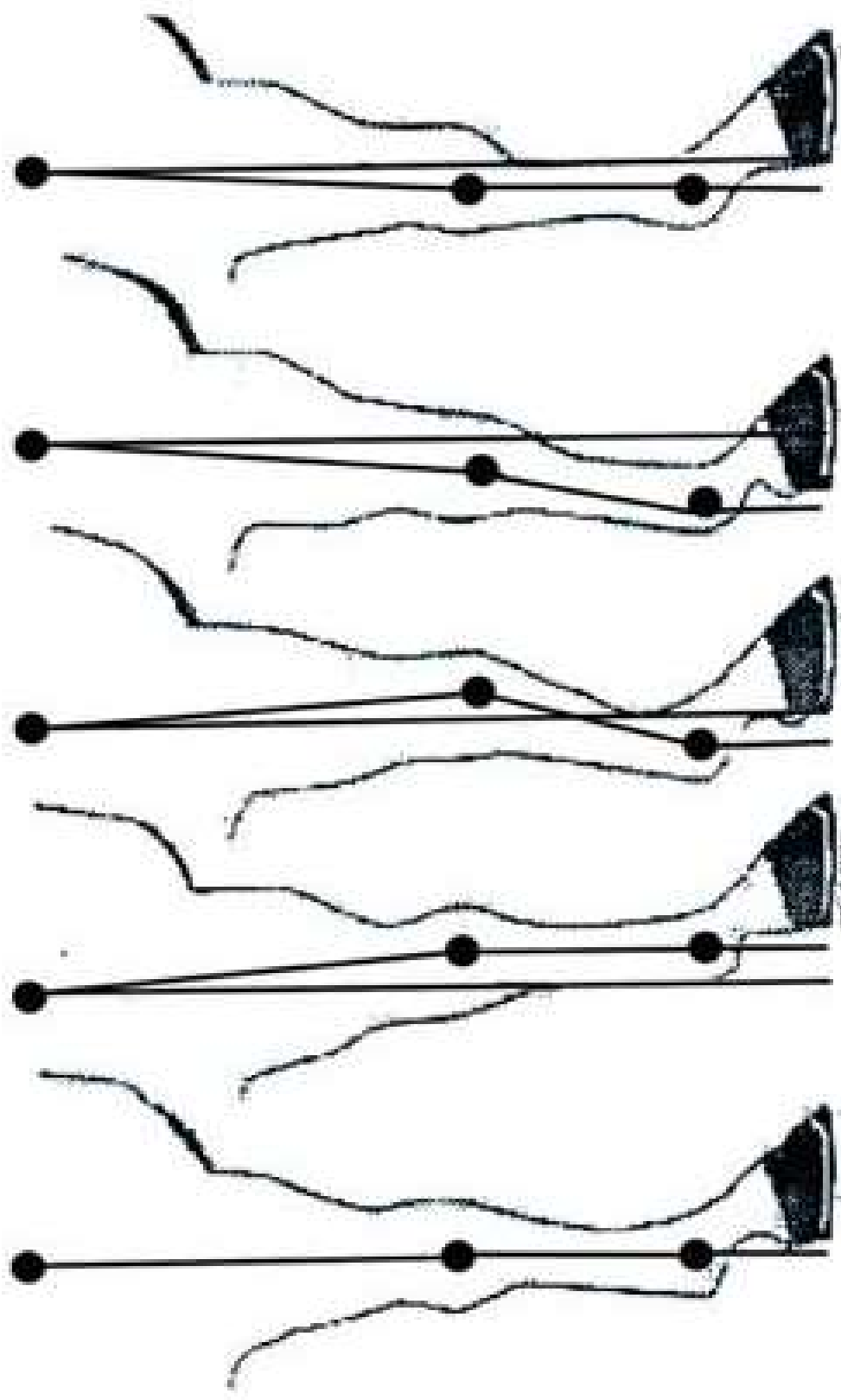
Vierkant staand paard van t

# Foreleg, front view

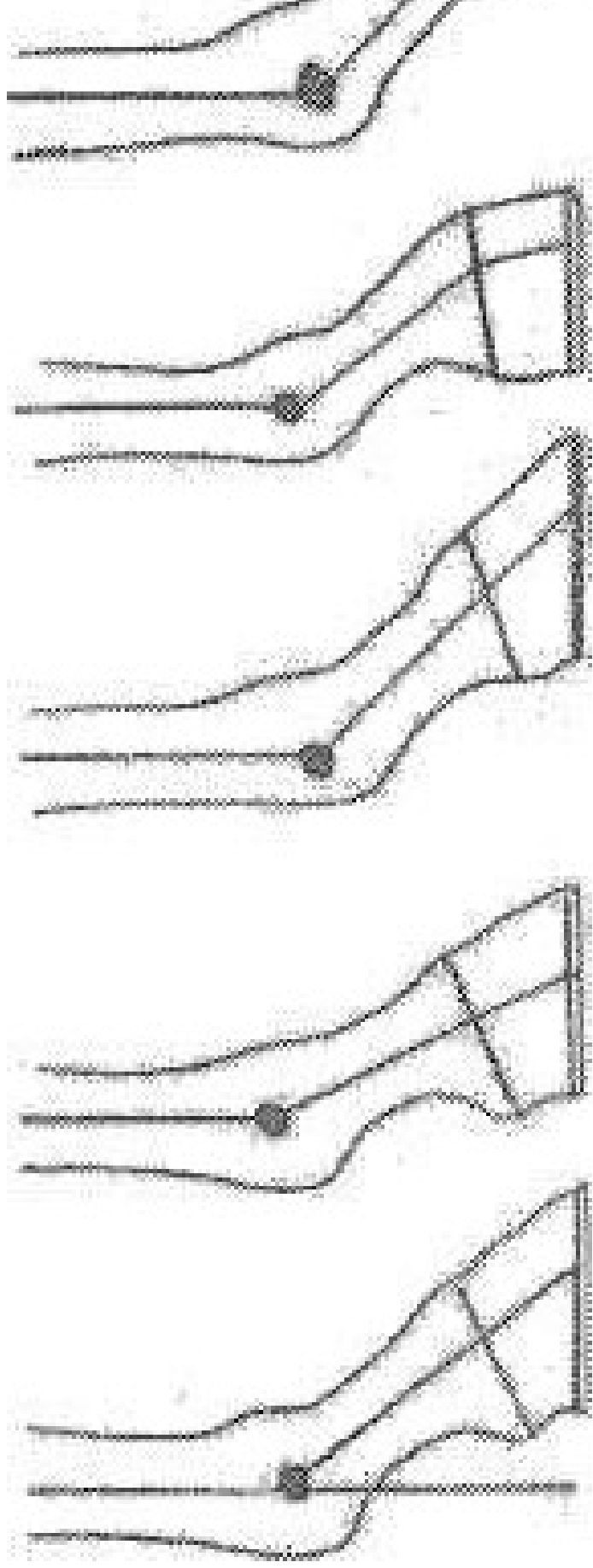


Normal Base narrow Base wide Toeing-in Toeing-out Bow-knee

# Foreleg, side view



# Pasterns: side view



**Normal**

45°-50°

**Steep**

> 50°

**Weak**

sloping

**Forwards**

broken line

**Back**

broken

# Standing under, back in the knee



# Toeing out



# Toeing in



# Weak pasterns



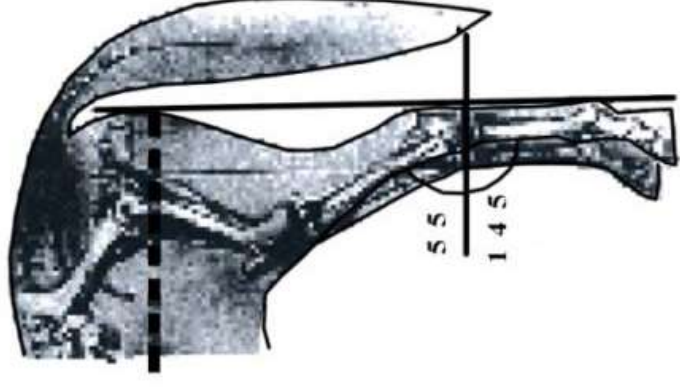


# Steep pastern



# Hind legs

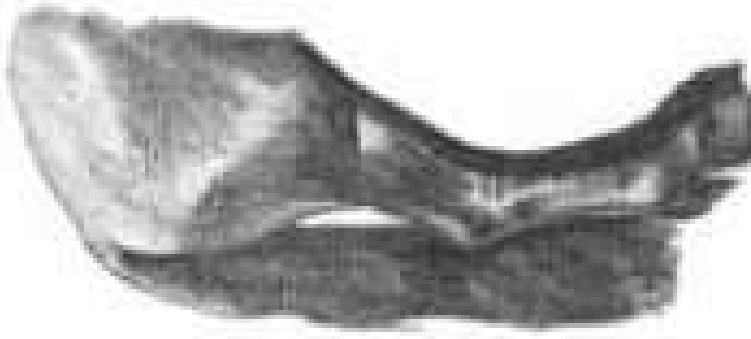
## From behind Side view



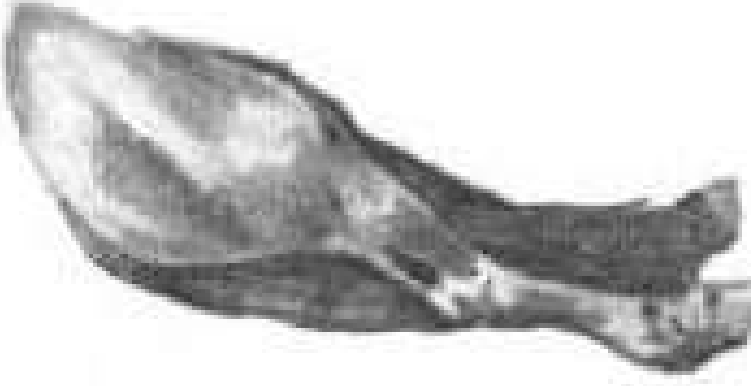
# Hind legs, from the side



Normal



Standing under

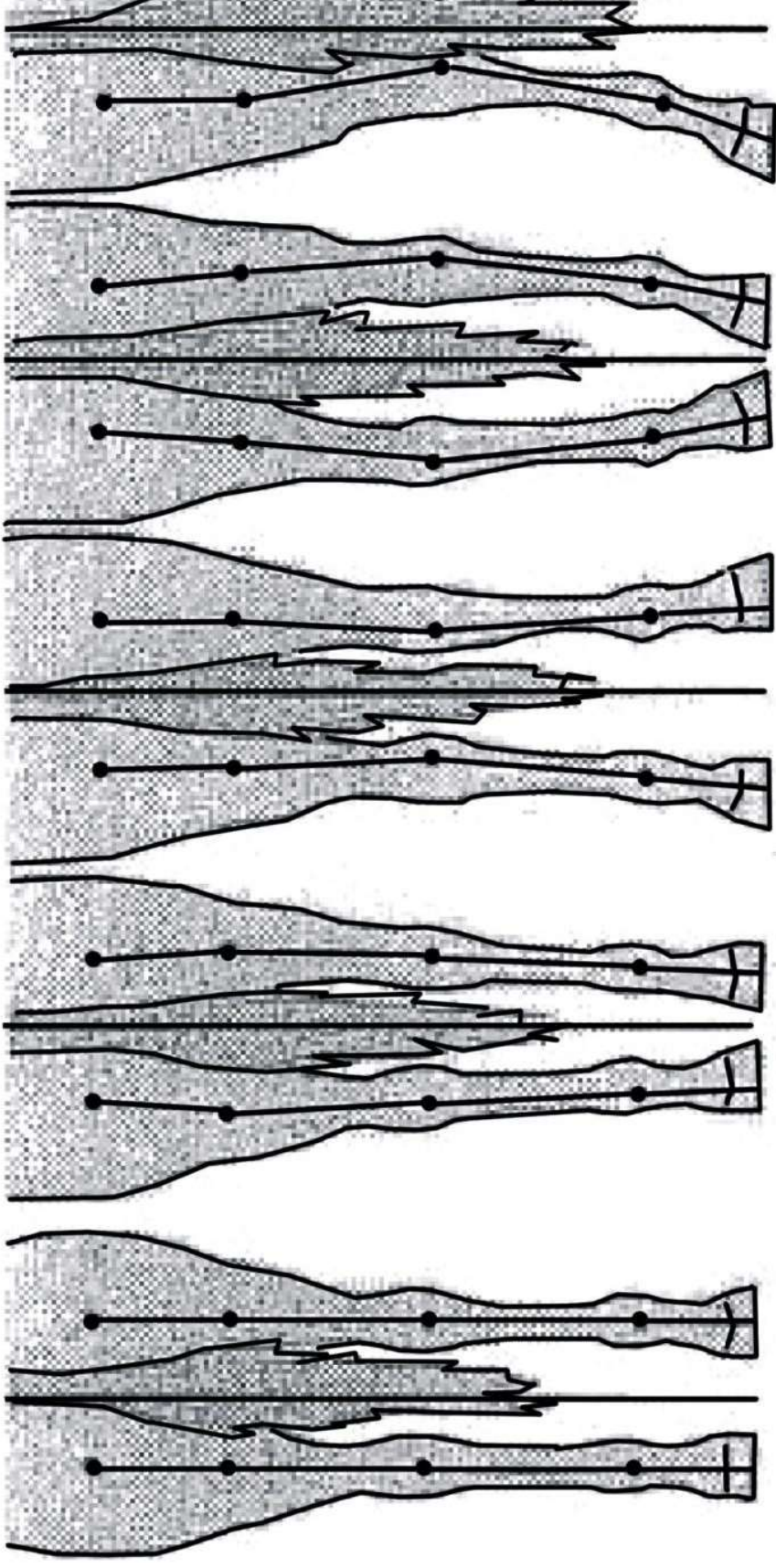


Camped out



Straight

# Hind legs, from behind



Normal

Base narrow

Base wide

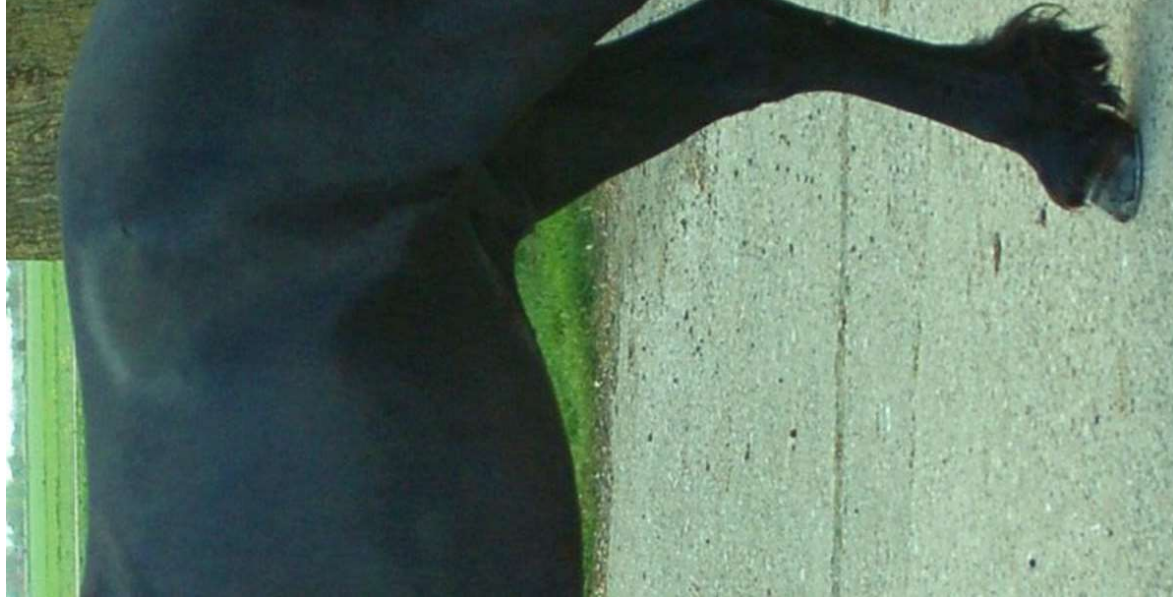
Bow-hocked

Cow-h

**Straight hind leg**



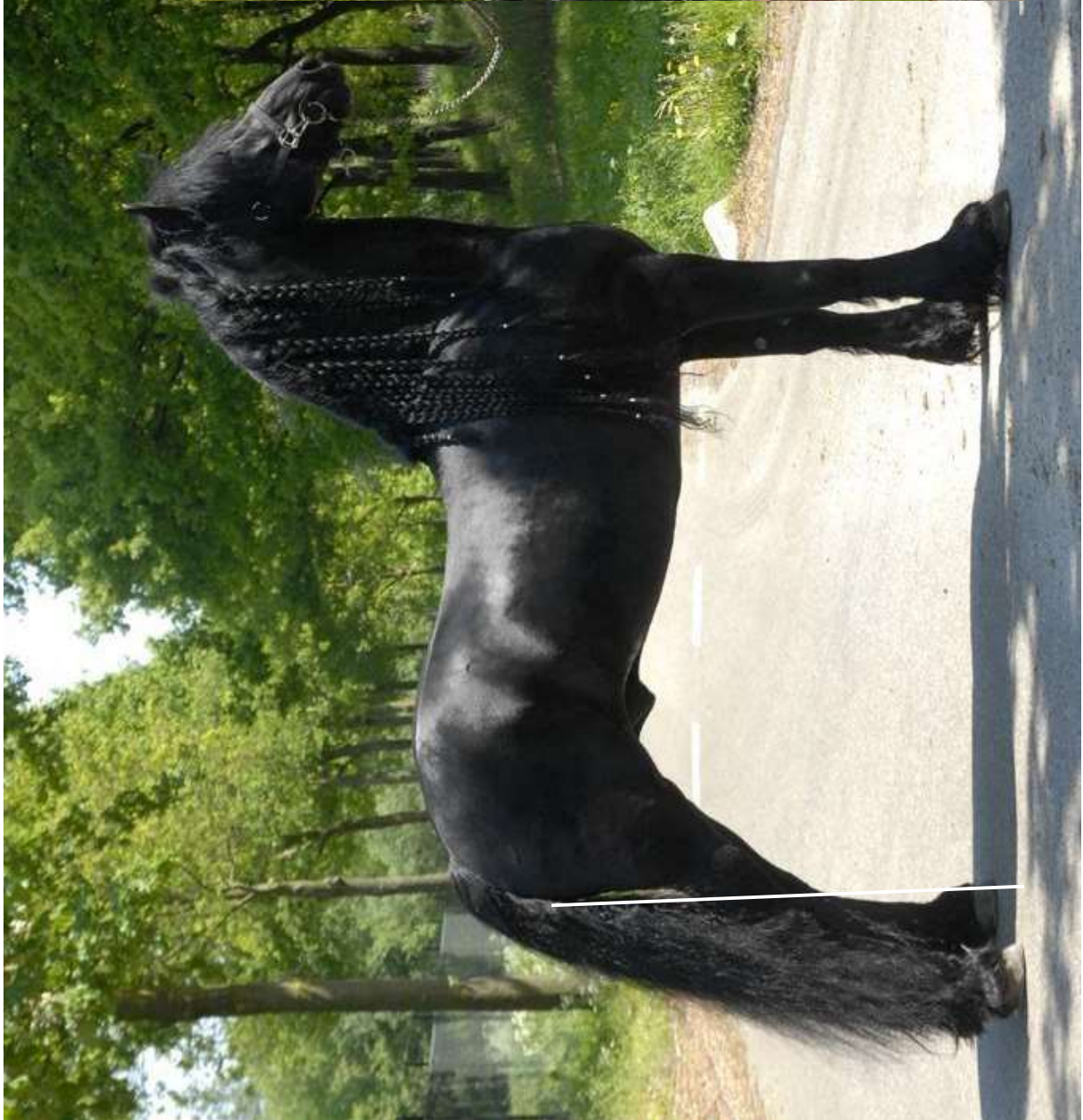
**Sickle hocked**



# Standing under



# Camped out



# Cow-hocked





# Gaits - Movement



# Gaits

## Basic gaits:

- Walk
- Trot
- Canter



# Walk

## We want to see:

- Regularity of beat and rhythm
- Correctness (4 feet in 2 parallel lines)
- Length of strides
- Expression (power and elasticity)
- Flexibility in the shoulder
- Bending/flexion in the hock

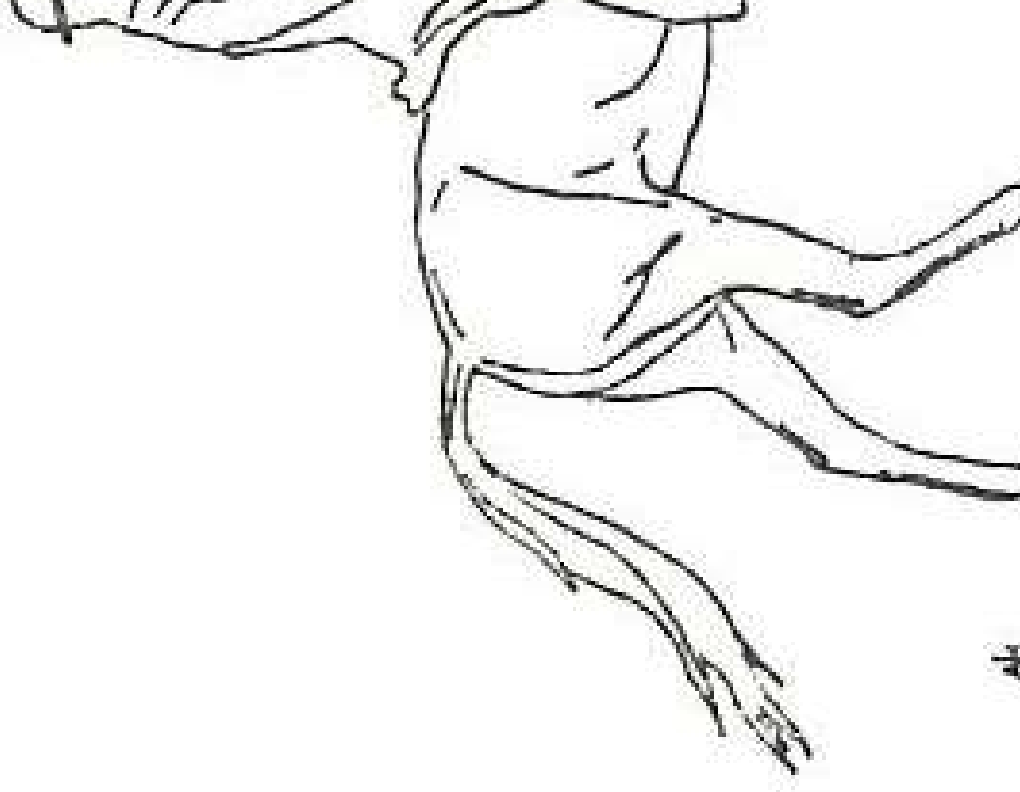


# Walk

## Less desirable:

- **Lateral (ambling walk)**
  - Foreleg to early forwards
  - Hind leg and foreleg of the same side almost simultaneously brought forward
- **Too roomy**
  - Turning hindquarters
  - Lacking power
  - Difficult to collect
- **Short-long (one hind leg further forward than th**
- **Cramped / stringhalt**

▼ North



# Stringhalt / Cramped



# Trot

## We want to see:

- Regularity of beat and rhythm
- Room (length of passes)
- Powerful hind leg
  - Flexion at the hock
- Foreleg shows knee action
- Balance / posture
  - Carrying hind legs
    - hind legs placed far under the body
    - gaskin at least vertical
  - Rising in the forehand with an elevated neck (self-carriage)
- Long moment of suspension
- Suppleness



# Going uphill Gaskin vertical



Goin



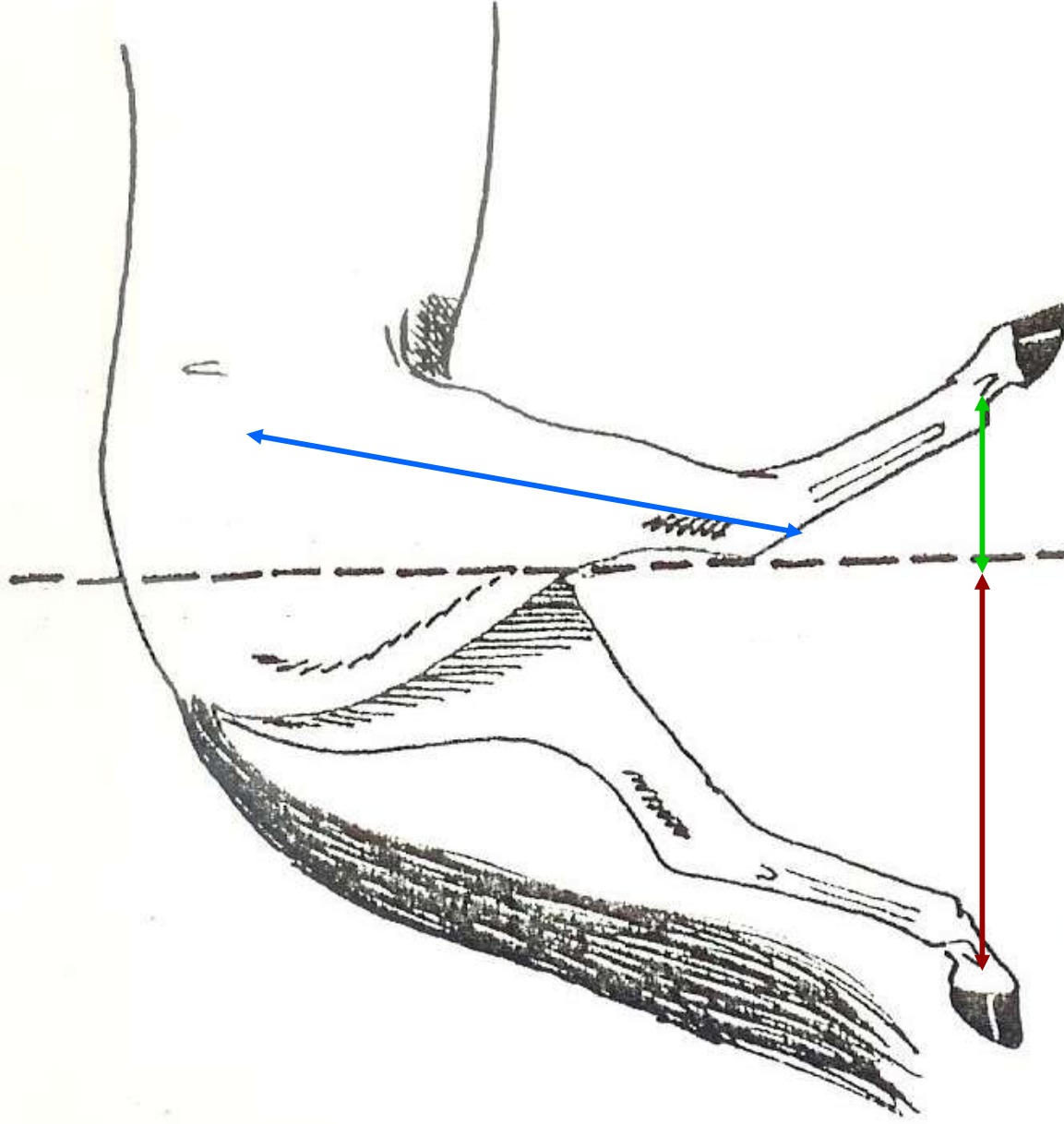


# Equal triangles

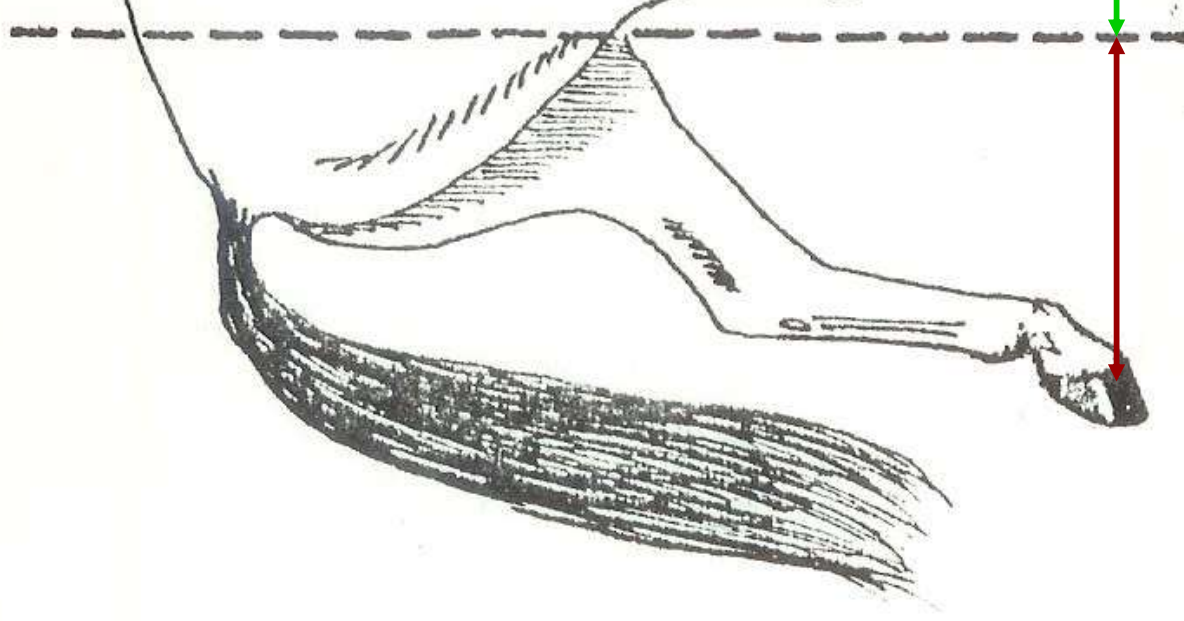


# Trot

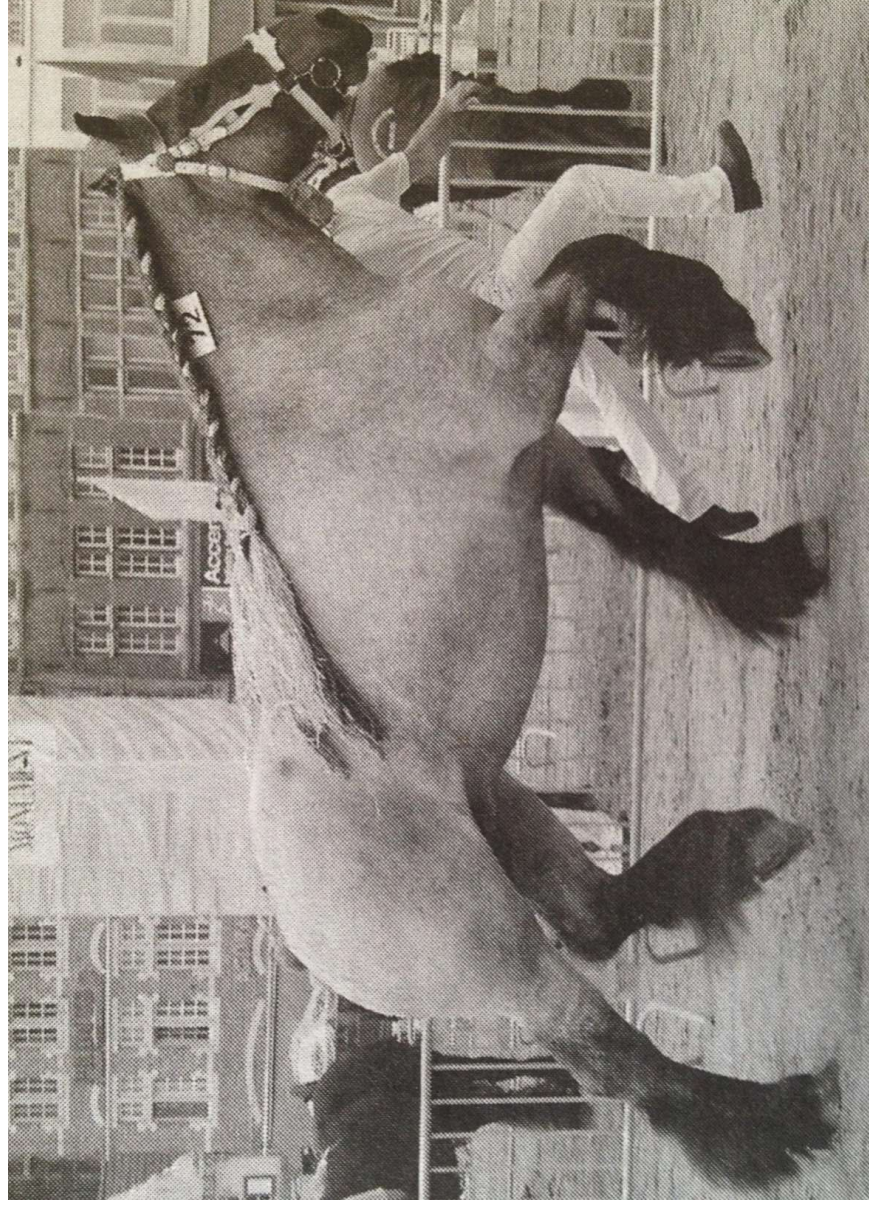
pushing



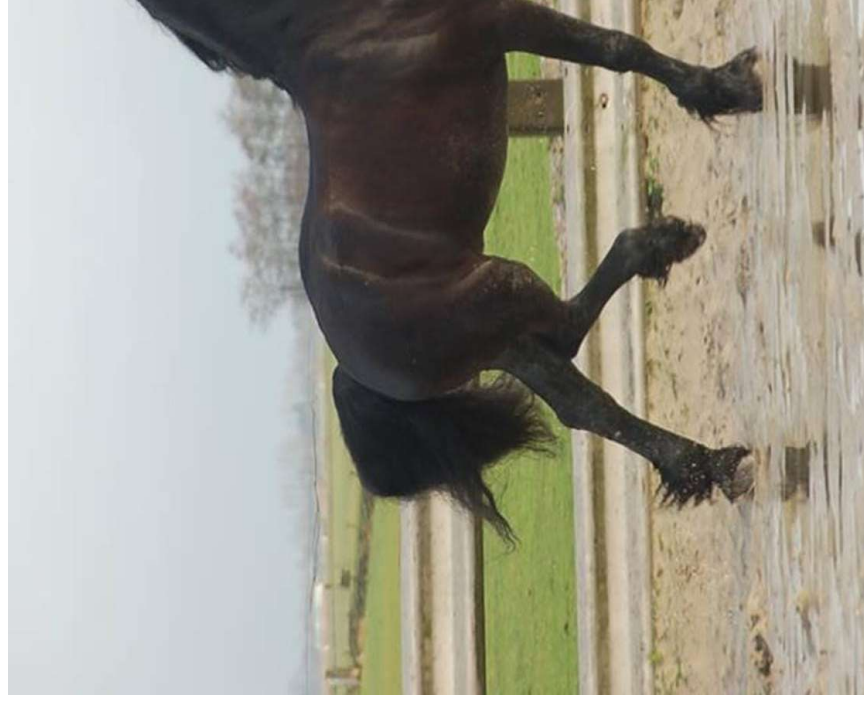
carryin



**Pushing trot**



**Carrying trot**

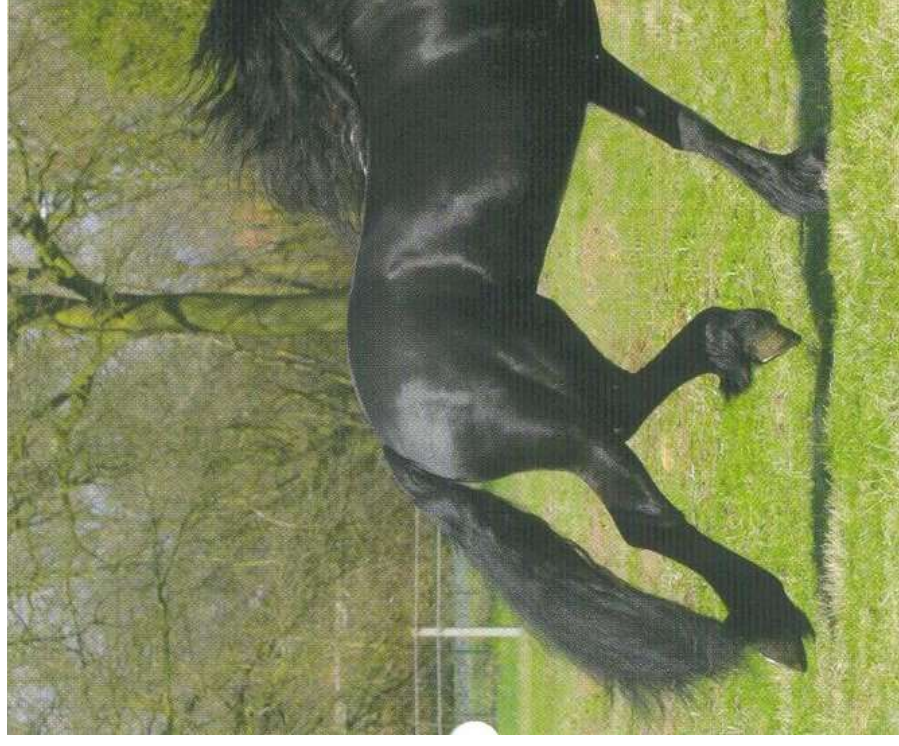
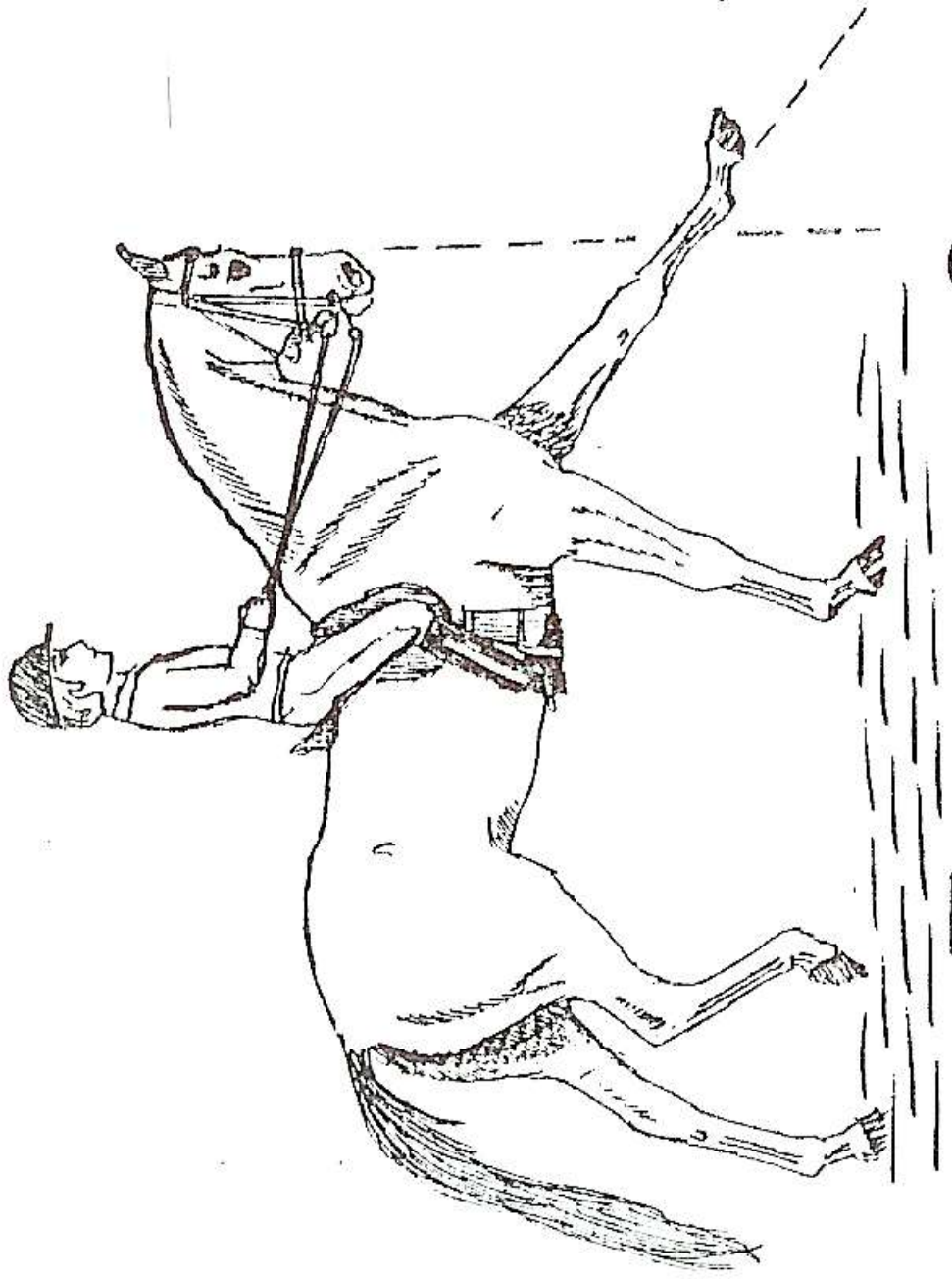


# Trot

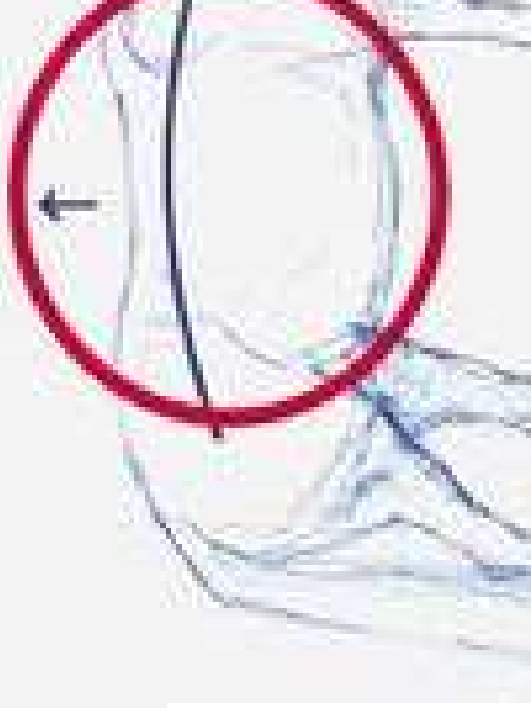
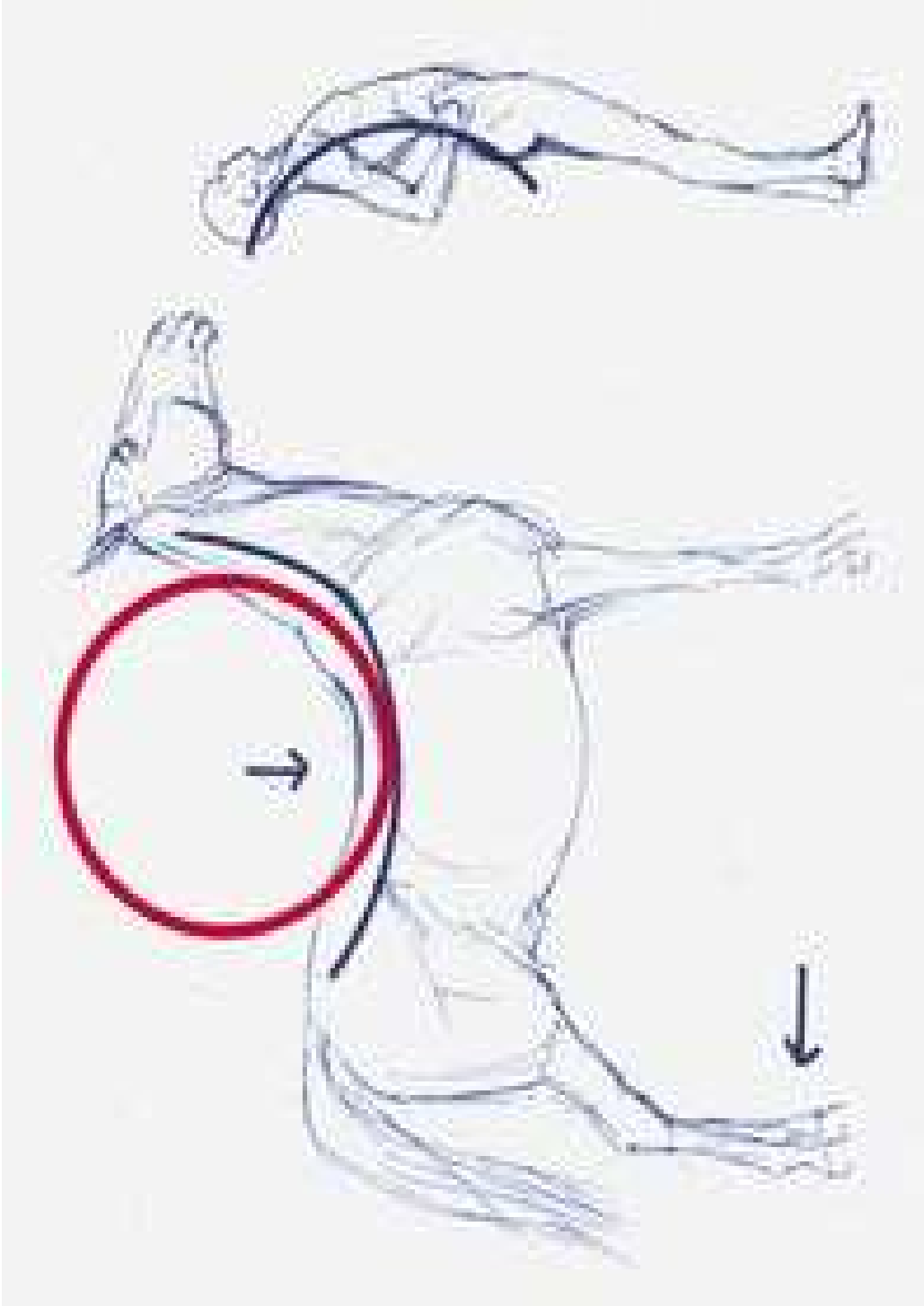
## Undesirable:

- Stinging (flinging): foreleg without bending
- Stamping:
  - lots of knee action
  - lacking shoulder freedom
  - foreleg not forwards
- Falling apart; making the body long, hind leg under, tight in the back
- Going on the forehand; sinking in the front; earlier down than hind leg
- Slow hind leg
- Heels into tail
- Ducking down the back

# Flinging



# Pushing down the back

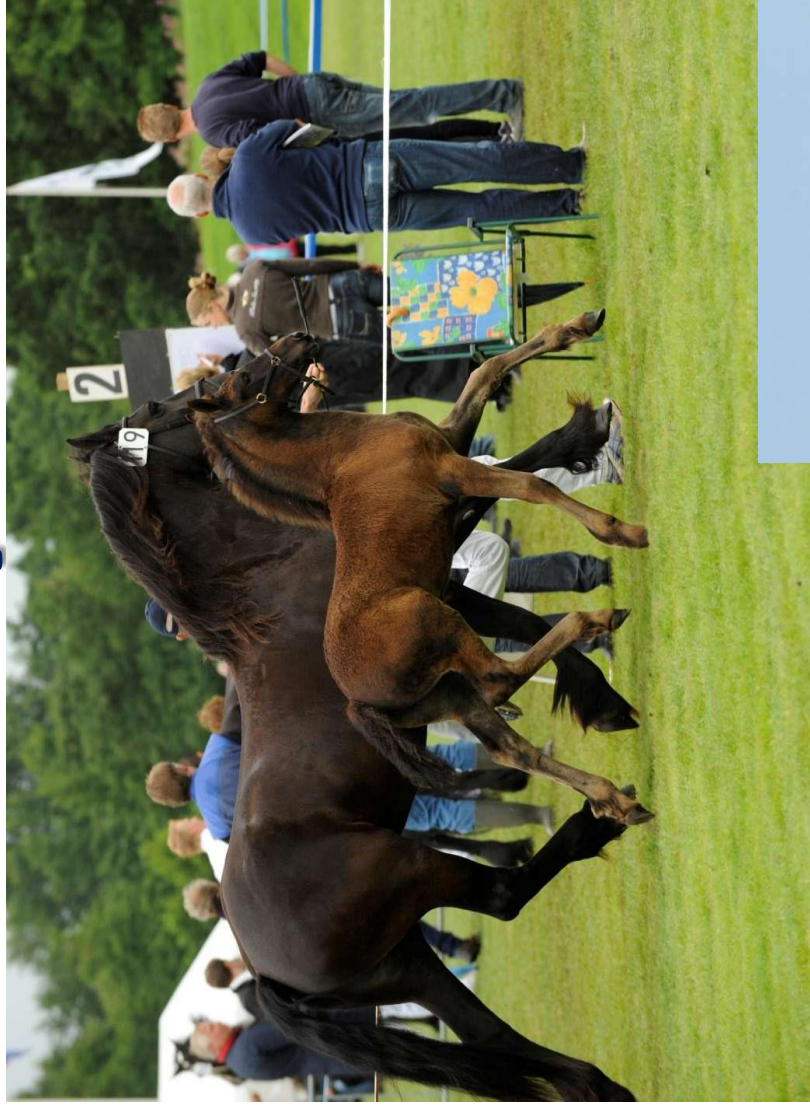


**Pushing down the back**  
**Not coming underneath**

**Slow**  
**Going down**



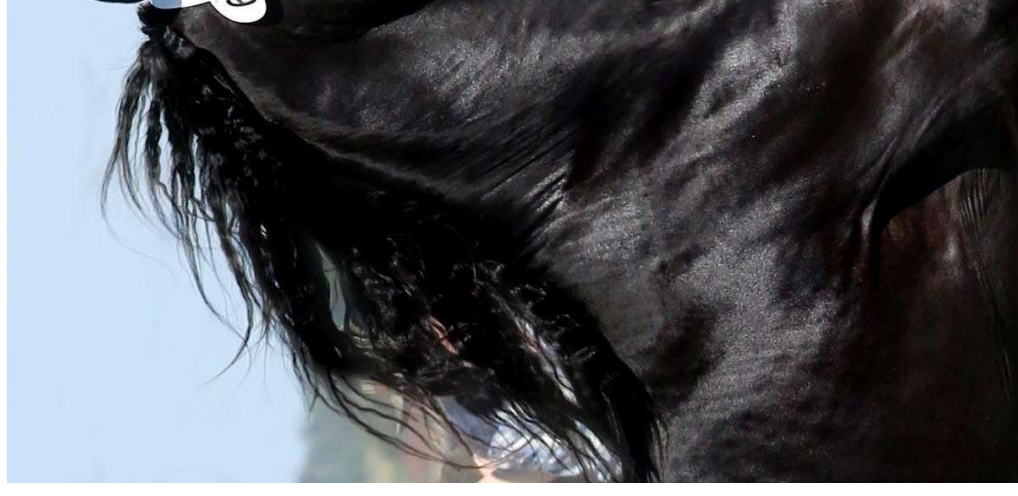
# Marks, premium predicates





# Marks for horses 3 years and

- Racial type / breed expression
- Conformation/frame
- Legwork
- Walk (2x)
- Trot (2x)



# Meaning of the marks

4 = bad

5 = insufficient

6 = sufficient

**6.5 = AVERAGE**

7 = more than sufficient

8 = good

9 = excellent



# Premiums Mares / Gelding

Average of the 5 marks (movement is imposed counts 2x)

7.5 and more 1<sup>st</sup> premium star Orange

7 - 7.5 2<sup>nd</sup> premium star Red ribbon

6.5 - 7 studdbook 3<sup>rd</sup> premium White

6 - 6.5 studdbook no premium Yellow

► For star: average movement > 6.5

# Stallions

Foalbook stallions

- Star: average of the marks  $\geq 7$   
average walk and trot  $\geq 6.5$   
movement counts double
- Not star

Never a premium (except 1- and 2-year olds).



# Special predicates

## Crown

- better 1<sup>st</sup> premium mares
- performance test  $\geq 77$  with average of walk, trot and canter
- each minimum of 6

## Model

- top of the mares
- 7 years or older
- good result in performance test (see above)
- at least 1 foal suckled

Sport / Sport Elite good achievements in competition

Prestatie

mare with 3 x Sport or IBOP  $\geq 75$  in

# Marks for foals

- Racial type / breed expression
- Conformation/frame
- Legwork
- Walk (2x)
- Trot (2x)



# Total number of points =

$$\text{Racial} + \text{Frame} + \text{Leg} + \text{Walk} \times 2 + \text{Trot} \times 2$$

➤ **1e premium**  
total 50 or more

➤ **2e premium**  
total 46 to 50

➤ **3e premium**  
total 40 to 46

➤ **no premium**  
or total less than 40  
or 1 x 4 or 2 x 5

orange ribbon

red ribbon

white ribbon

yellow ribbon

# Linear scoring Index





# Linear scoring

## Why linear scoring?

- Information for the owner
- Collect data:
  - Index stallions
  - Information for the breeder



Element	Characteristic	Group	5	10	15	20	25	30	35	40	45	Characteristic
Expression of the head	plain	type										noble
Head-neck connection	heavy	type/fra										light
Length of neck	short	type/fra										long
Stance of neck	horizontal	type										vertical
Hair colour	faded black	type										jet black
Amount of hair	little	type										much
Stance of shoulder	steep	frame										sloping
Shape of back	weak	frame										tight
Shape of loins	weak	frame										tight
Shape of croup	straight	frame										sloping
Length of croup	short	frame										long
Direction of body	dow nhill	frame										upstanding
Length of forearm	short	frame										long
Stance of foreleg	straight	ft&legs										standing under
Stance of hindleg	sickle-hocked	ft&legs										straight
Length of pastern	short	ft&legs										long
Shape of hooves	small	ft&legs										large
Quality of legs	course	ft&legs										clean
Straightness foreleg	toeing in	ft&legs										toeing out
Walk, length of strides	short	walk										long
Walk, expression	weak	walk										powerful
Trot, length of strides	short	trot										long
Trot, expression	weak	trot										powerful
Posture	dow nhill	trot										upstanding
Suppleness	little	trot										much
Shape of movement	behind body	trot										underneath bod
Rhythmn of movement	slow	trot										high
	raciaitype	frame		feet&legs	walk		trot					

# Linear scoring form

## Upper bar-graph column

**Gives a description                      27 characteristics**

- Score of a characteristic 5 - 45
- Average Friesian horse = 25
- The more extreme left or right,  
the more rare (good or bad)
- Gray shading score is desirable
- Optimum characteristics: in the middle
- Maximum characteristics right side

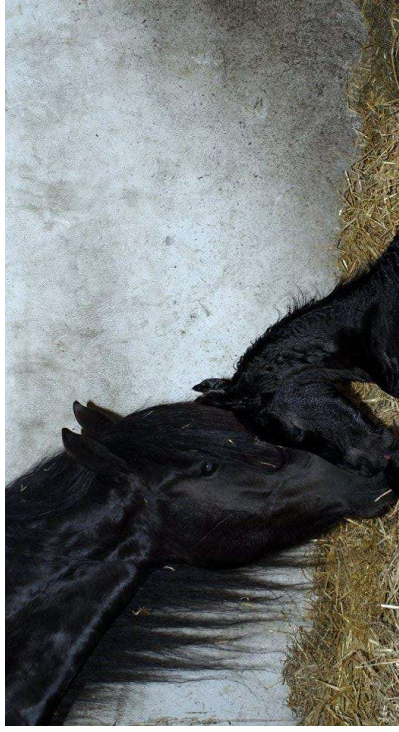
# Stallion index

KFPS collects all the linear scoring forms to m stallion index with the breeding values

Average breeding value 100

Improvement:

- Breeding value for maximum characteristics
- Breeding value for optimum characteristics

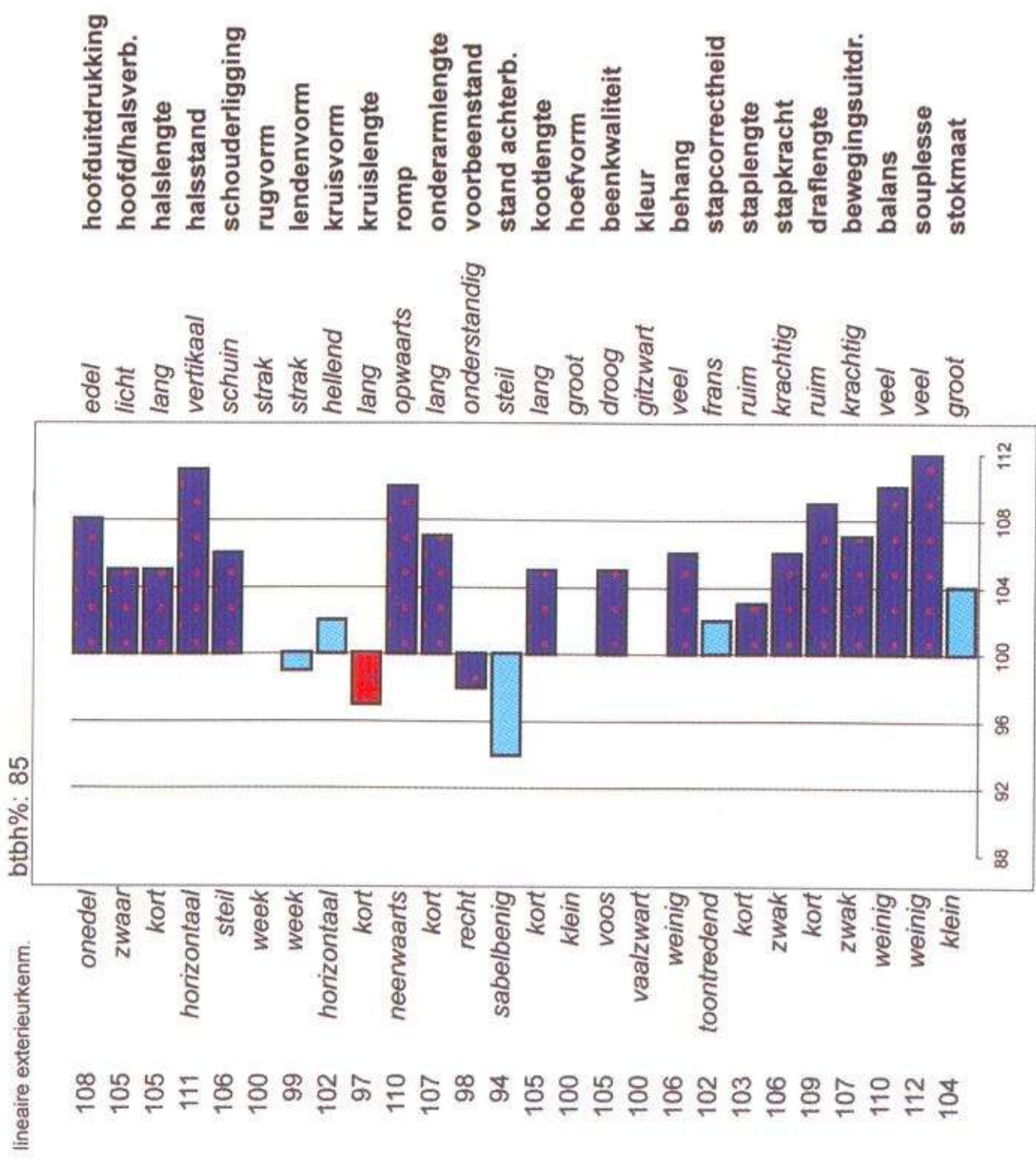


# Stallion index

- Breeding value for maximum characteristic
  - Dark blue right site desired (the more the better)
  - Red left site undesired (the less the better)
- Breeding value for optimum characteristic
  - Light blue middle



stb199821321  
 ster: 42  
 aftek. toegst.: 1,8%  
 geb.: 27-04-98  
 niet toegest.: 1,1%  
 v.: Leffert  
 m.v. m.m.v  
 m.: Selma  
 Doeke  
 Tsjalling



waarderende exterieurkenmerken  
 rastype bouw draf totaal

# [www.kfps.nl](http://www.kfps.nl)

## Detailed information about:

- Breeding goal and sport goal
- Regulations
- Inspections
- Stallions and mares (yours too!)
  - Pedigrees
  - Performance scores
  - Offspring
  - Breeding values

